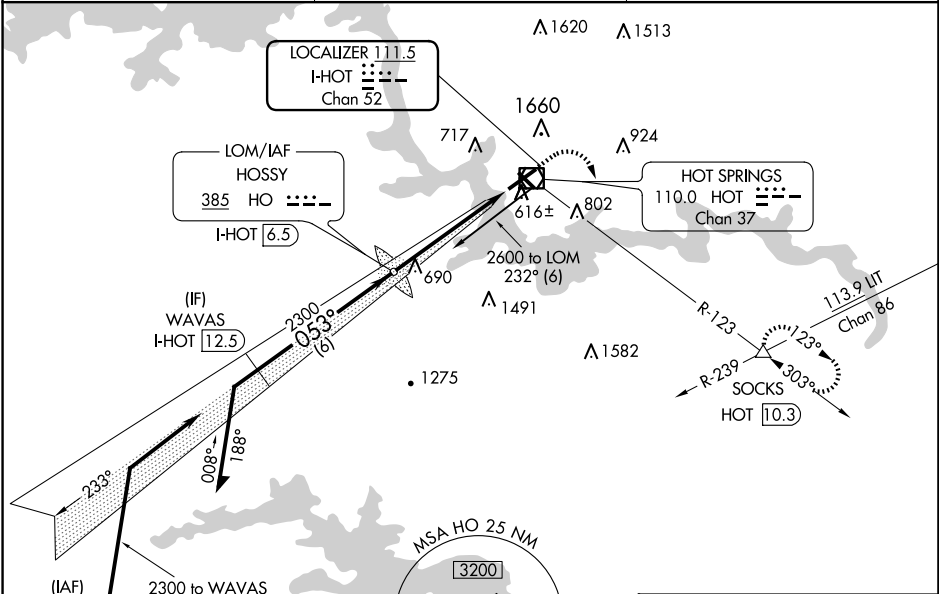


LOC/DME I-HOT 111.5 Chan 52	APP CRS 053°	Rwy Idg 6595 TDZE 516 Apt Elev 540
---	------------------------	---

ILS or LOC RWY 5
MEML FLD (HOT)

ADF or DME required.	MALSR A5	MISSED APPROACH: Climb to 1000 then climbing right turn to 3000 on HOT VOR/DME R-123 to SOCKS INT/HOT 10.3 DME and hold.
NA Circling NA northwest of Rwy 5-23. Use I-HOT DME when on localizer course.		

ASOS 119.925	MEMPHIS CENTER 128.475 377.15	UNICOM 123.0 (CTAF)
------------------------	---	-------------------------------



MARKI \triangle 008° (4.9)
HOT 21.4 and 053° (12.5)

Remain within 10 NM

HOSSY LOM I-HOT 6.5 2600

2500 233° 2300 053°

GS 3.00° TCH 57

2300

4 NM 1.1

*I-HOT 2.5 I-HOT 1.4

1000 3000 SOCKS \triangle

*LOC only.

ELEV 540 **D** TDZE 516

590

0.6% UP 6395 X 150 4098 X 100 0.4% UP

053° 5.1 NM from FAF

HIRL Rwy 5-23 **1**
MIRL Rwy 13-31 **1**
REIL Rwy 13 **1**

CATEGORY	A	B	C	D
S-ILS 5	732- $\frac{1}{2}$ 216 (200- $\frac{1}{2}$)			
S-LOC 5	940- $\frac{1}{2}$	424 (400- $\frac{1}{2}$)	940- $\frac{3}{4}$	424 (400- $\frac{3}{4}$)
C CIRCLING	1080-1	540 (600-1)	1380-2 $\frac{1}{2}$ 840 (900-2 $\frac{1}{2}$)	1620-3 1080 (1100-3)

FAF to MAP 5.1 NM					
Knots	60	90	120	150	180
Min:Sec	5:06	3:24	2:33	2:02	1:42

SC-1, 10 JUL 2025 to 07 AUG 2025

SC-1, 10 JUL 2025 to 07 AUG 2025