

WAAS CH <b>86620</b> <b>W36A</b>	APP CRS <b>358°</b>	Rwy Idg TDZE Apt Elev	<b>5998</b> <b>202</b> <b>206</b>
--	------------------------	-----------------------------	---

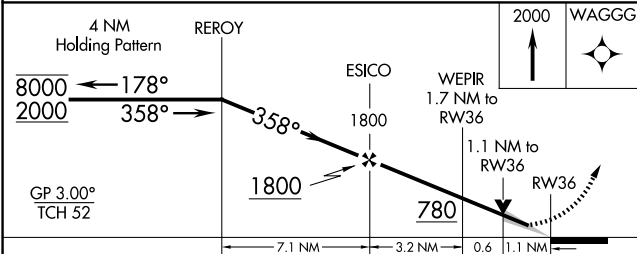
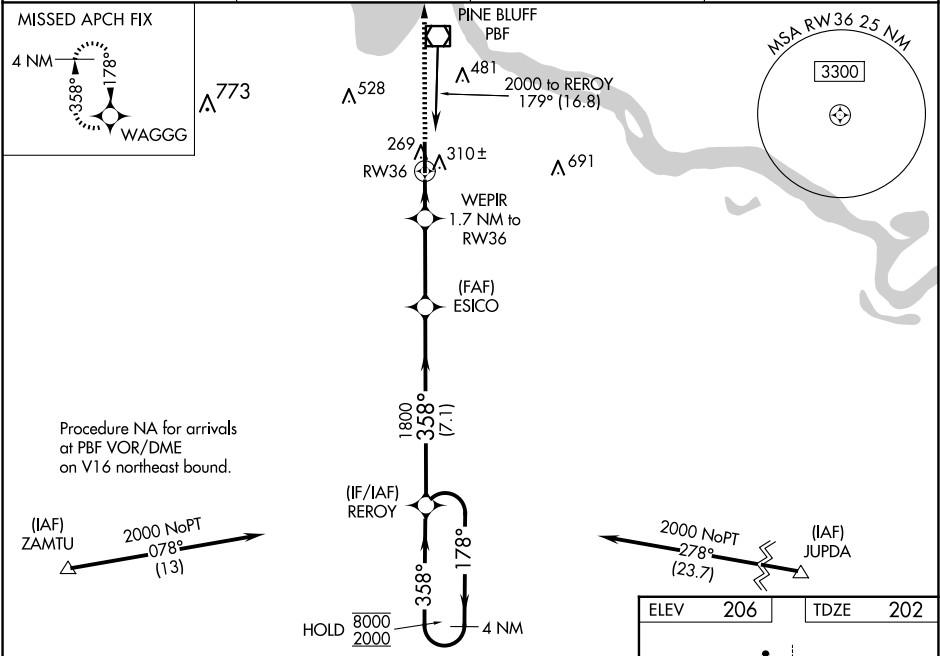
**RNAV (GPS) RWY 36**  
PINEBLUFF RGNL/GRIDER FLD (PBF)

RNP APCH - GPS.

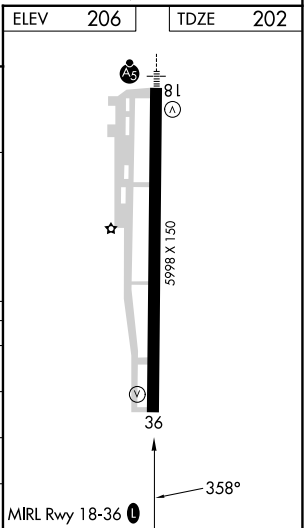
▼ Baro-VNAV and VDP NA when using Stuttgart altimeter setting. For uncompensated Baro-VNAV systems, LNAV/VNAV NA below -15°C or above 42°C. When local altimeter setting not received, use Stuttgart altimeter setting and increase LPV DA to 527 feet. Increase LNAV/VNAV DA to 562 feet. Increase all MDAs 80 feet and LNAV visibility Cat C/D ¼ SM, and Circling visibility Cat C/D ¼ SM.

MISSED APPROACH: Climb to 2000 direct WAGGG and hold.

ASOS <b>120.775</b>	LITTLE ROCK APP CON <b>119.85 353.6</b>	CLNC DEL <b>119.85</b>	UNICOM <b>123.0 (CTAF) 0</b>
------------------------	--	---------------------------	---------------------------------



CATEGORY	A	B	C	D
LPV DA	452-1 250 (300-1)			
LNAV/VNAV DA	487-1 285 (300-1)			
LNAV MDA	600-1 398 (400-1)	600-1 398 (400-1 1/8)		
CIRCLING	660-1 454 (500-1)	680-1 474 (500-1)	840-1 634 (700-1 3/4)	880-2 674 (700-2 1/4)



SC-1, 10 JUL 2025 to 07 AUG 2025

SC-1, 10 JUL 2025 to 07 AUG 2025