

VOR/DME JST
113.0
Chan **77**

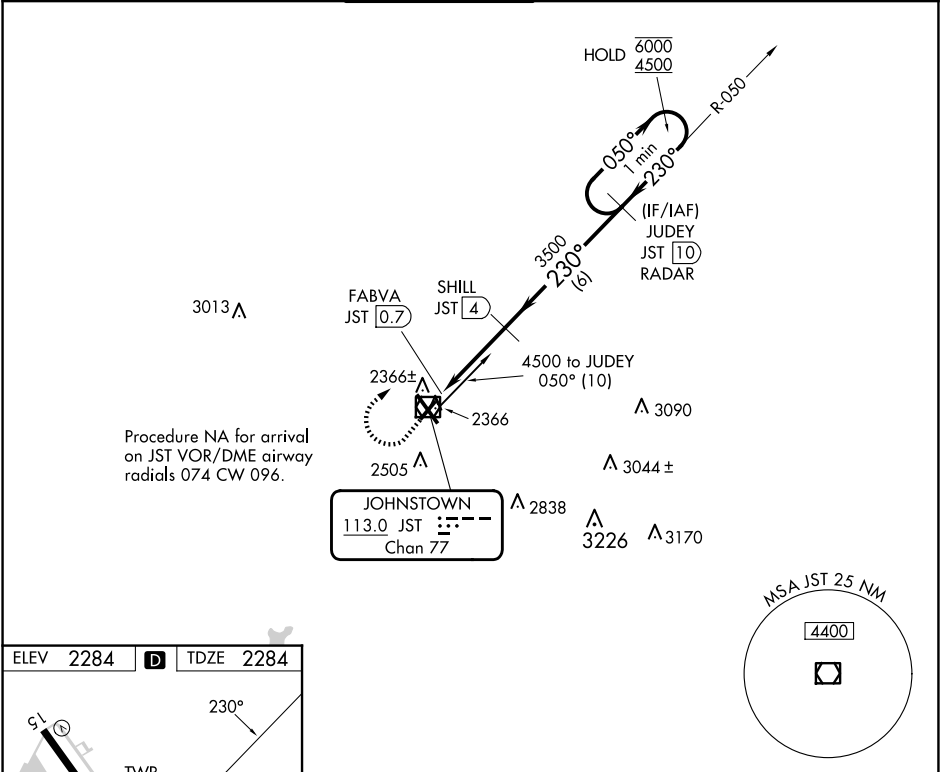
APP CRS
230°

Rwy Idg
TDZE
Apt Elev
4387
2284
2284

VOR Z RWY 23

JOHN MURTHA JOHNSTOWN/CAMBRIA COUNTY (JST')

DME required.			MISSED APPROACH: Climb to 3000 then climbing right turn to 4500 on heading 075° and JST VOR/DME R-050 to JUDEY/JST 10 DME/RADAR and hold.		
Rwy 23 helicopter visibility reduction below ¾ SM NA.					
ATIS 118.325	JOHNSTOWN APP CON ★ 121.2 299.2	JOHNSTOWN TOWER ★ 125.75 (CTAF) 0	GND CON 121.6	CLNC DEL 126.85 235.775	UNICOM 122.95



ELEV 2284 D TDZE 2284

3000

4500

JST R-050

JUDEY JST 10 RADAR

One Minute Holding Pattern

JUDEY JST 10 RADAR

050°

230°

6000

4500

FABVA JST 0.7

JST 1.2

SHILL JST 4

JST 2.99°

TCH 45

3500

0.4

0.5

2.8 NM

6 NM

CATEGORY	A	B	C	D
S-23	2620-1 336 (400-1)			
CIRCLING	2700-1 416 (500-1)	2880-1 596 (600-1)	2880-1½ 596 (600-1½)	3000-2¼ 716 (800-2¼)

NE-4, 10 JUL 2025 to 07 AUG 2025

NE-4, 10 JUL 2025 to 07 AUG 2025