

VOR/DME JST	APP CRS	Rwy Idg	6698
113.0	146°	TDZE	2276
Chan 77		Apt Elev	2284

VOR Y RWY 15

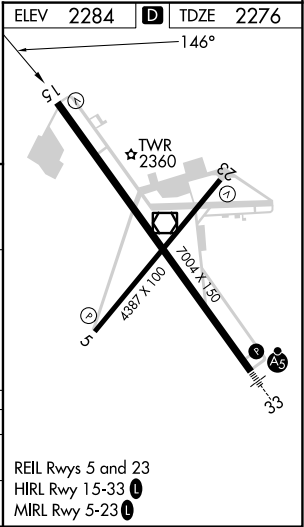
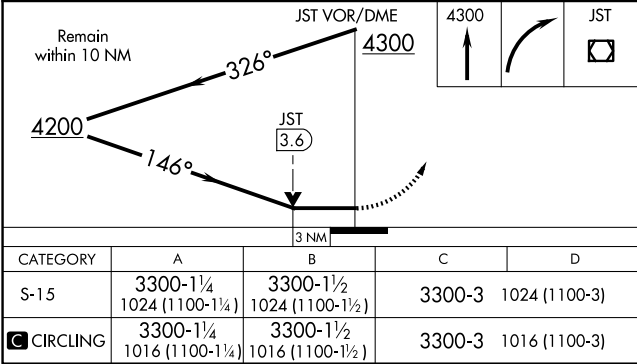
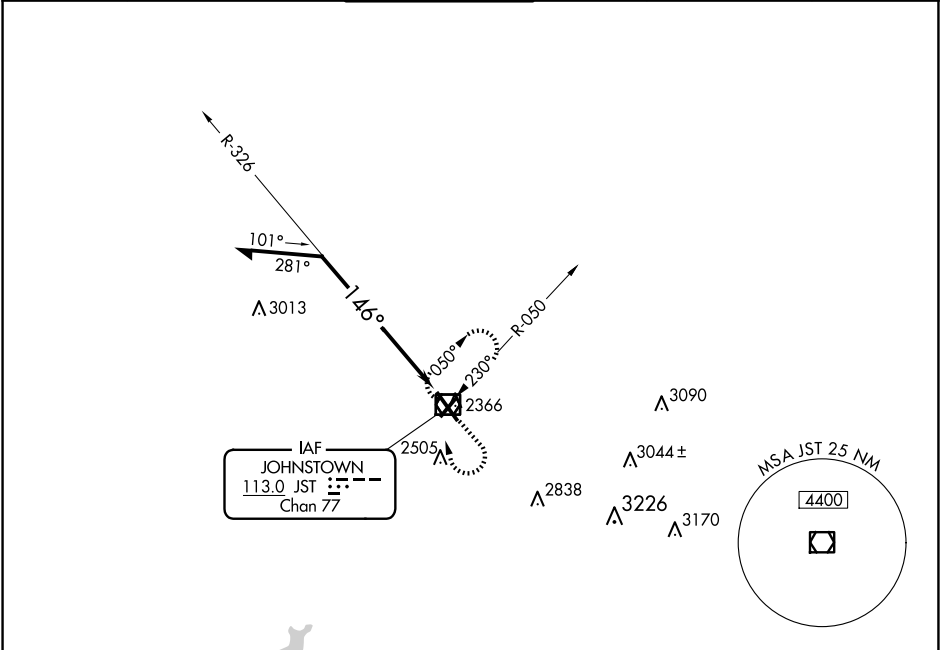
JOHN MURTHA JOHNSTOWN/CAMBRIA COUNTY (JST)

▼

▲

MISSED APPROACH: Climb to 4300 then right turn direct JST VOR/DME and hold.

ATIS	JOHNSTOWN APP CON ★	JOHNSTOWN TOWER ★	GND CON	CLNC DEL	UNICOM
118.325	121.2 299.2	125.75 (CTAF) 0	121.6	126.85 235.775	122.95



NE-4, 10 JUL 2025 to 07 AUG 2025

NE-4, 10 JUL 2025 to 07 AUG 2025