

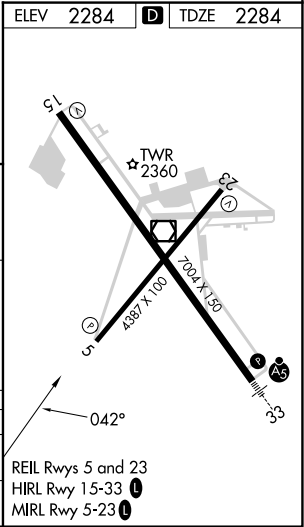
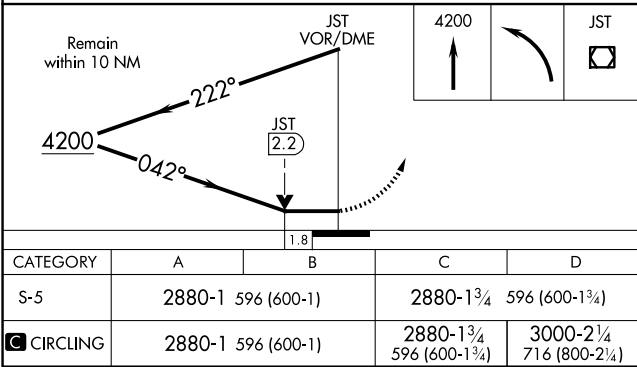
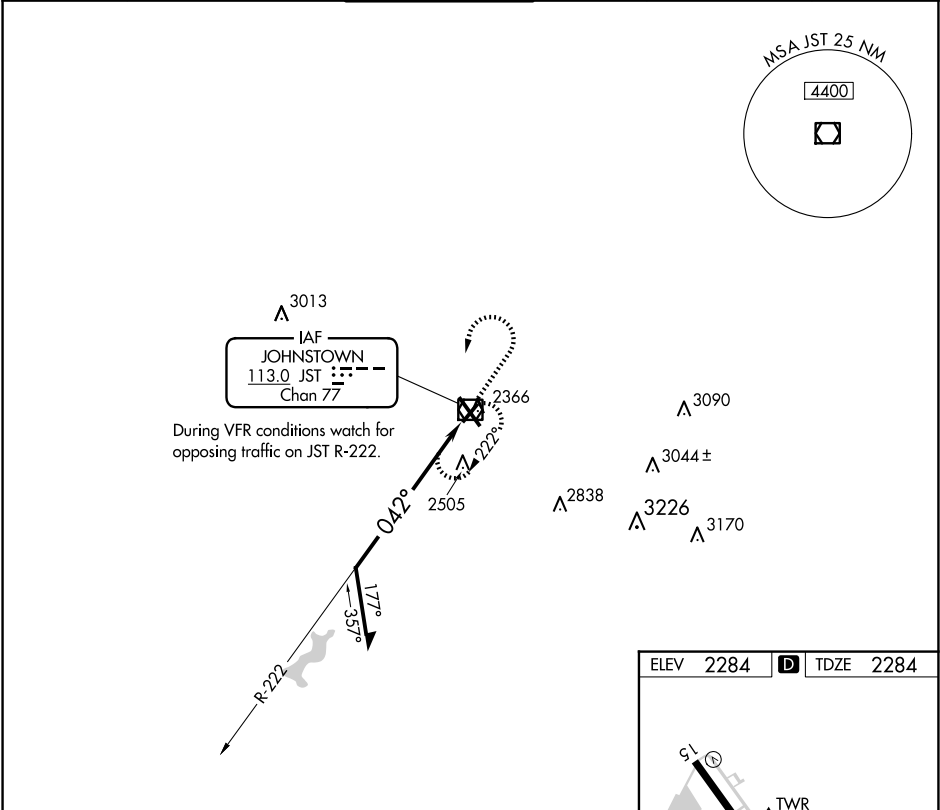
VOR/DME JST	APP CRS	Rwy Idg	4387
113.0	042°	TDZE	2284
Chan 77		Apt Elev	2284

VOR RWY 5

JOHN MURTHA JOHNSTOWN/CAMBRIA COUNTY (JST')

<div><div>▼</div><div>▲</div></div> <div>Rwy 5 helicopter visibility reduction below ¾ SM NA.</div>	MISSED APPROACH: Climb to 4200 then left turn direct JST VOR/DME and hold.
---	--

ATIS	JOHNSTOWN APP CON ★	JOHNSTOWN TOWER ★	GND CON	CLNC DEL	UNICOM
118.325	121.2 299.2	125.75 (CTAF) 0	121.6	126.85 235.775	122.95



NE-4, 10 JUL 2025 to 07 AUG 2025

NE-4, 10 JUL 2025 to 07 AUG 2025