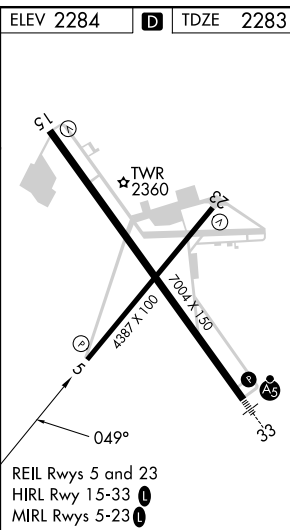
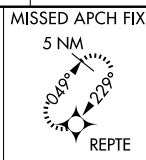


22363

RNAV (GPS) RWY 5

JOHN MURTHA JOHNSTOWN/CAMBRIA COUNTY (JST)

**MISSED APPROACH:** Climb to 4900 direct REPTC and hold.

UNICOM  
122.95

JOHN MURTHA JOHNSTOWN/CAMBRIA COUNTY (JST)  
40°19'N-78°50'W      PNAV (GPS) PWAY 5

RNAV (GPS) RWY 5

NE-4, 10 JUL 2025 to 07 AUG 2025