

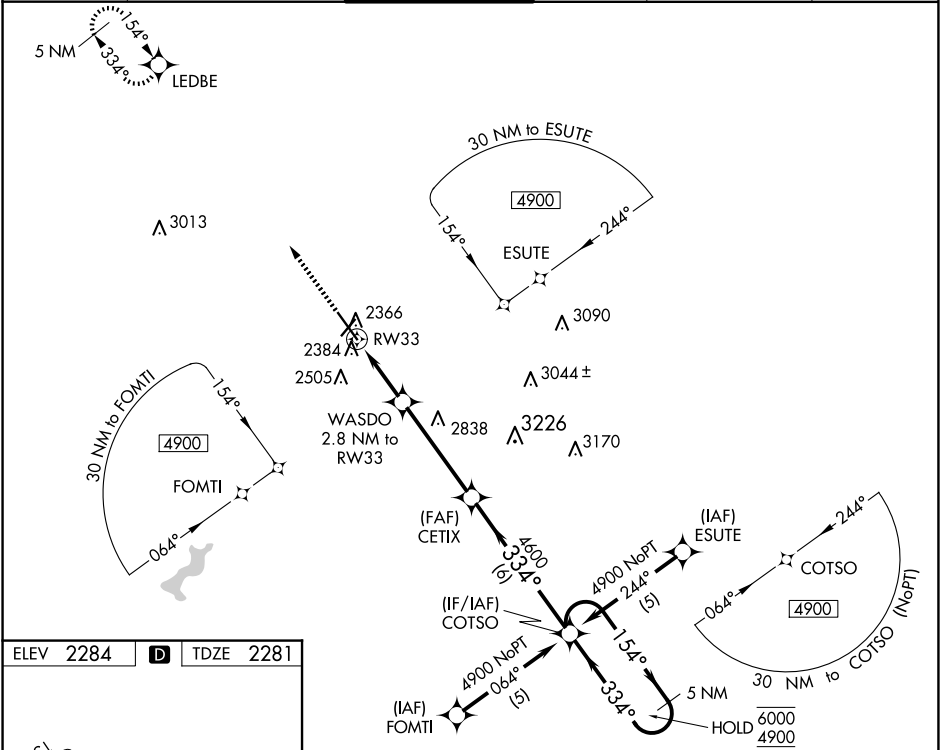
WAAS CH 61113 W33A	APP CRS 334°	Rwy Idg TDZE 2281 Apt Elev 2284
--	------------------------	---

RNAV (GPS) RWY 33

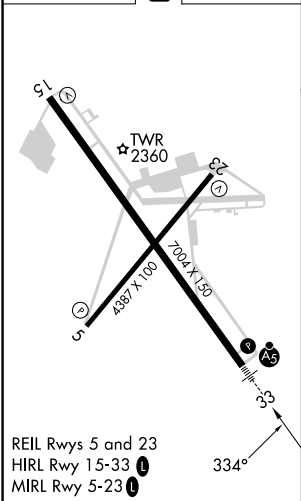
JOHN MURTHA JOHNSTOWN/CAMBRIA COUNTY (JST')



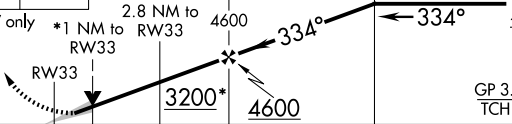

RNP APCH.	MALSR	MISSED APPROACH: Climb to 4800 direct LEDBE and hold.
<div><div>▼</div><div>▲</div></div> Inop table does not apply to LNAV Cat D. For uncompensated Baro-VNAV systems, LNAV/VNAV NA below -19°C or above 54°C. For inop ALS increase LNAV/VNAV all Cats visibility to ½ SM and LNAV Cat C visibility to 1 SM.	<div><div>AS</div></div>	

ATIS 118.325	JOHNSTOWN APP CON ★ 121.2 299.2	JOHNSTOWN TOWER ★ 125.75 (CTAF) 0	GND CON 121.6	CLNC DEL 126.85 235.775	UNICOM 122.95
------------------------	---	---	-------------------------	-----------------------------------	-------------------------



ELEV 2284	D	TDZE 2281
-----------	----------	-----------



4800	LED BE	VGSI and RNAV glidepath not coincident (VGSI Angle 3.00/TCH 53).		5 NM Holding Pattern	
					
*LNAV only	*1 NM to RW33	WASDO 2.8 NM to RW33	CETIX 4600	154° → 6000 ← 334° 4900	GP 3.00° TCH 58
1 NM		1.8 NM	4.2 NM	6 NM	
CATEGORY	A		B	C	D
LPV DA	2481-1½		200 (200-½)		
LNAV/ VNAV DA	2552-½		271 (300-½)	2552-¾ 271 (300-¾)	
LNAV MDA	2640-½ 359 (400-½)		2640-5⁄8 359 (400-5⁄8)	2640-1 359 (400-1)	
 CIRCLING	2700-1 416 (500-1)		2880-1 596 (600-1)	2880-1½ 596 (600-½)	3000-2¼ 716 (800-2¼)