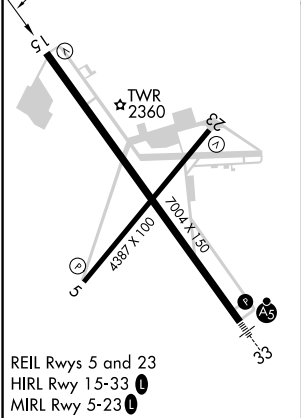
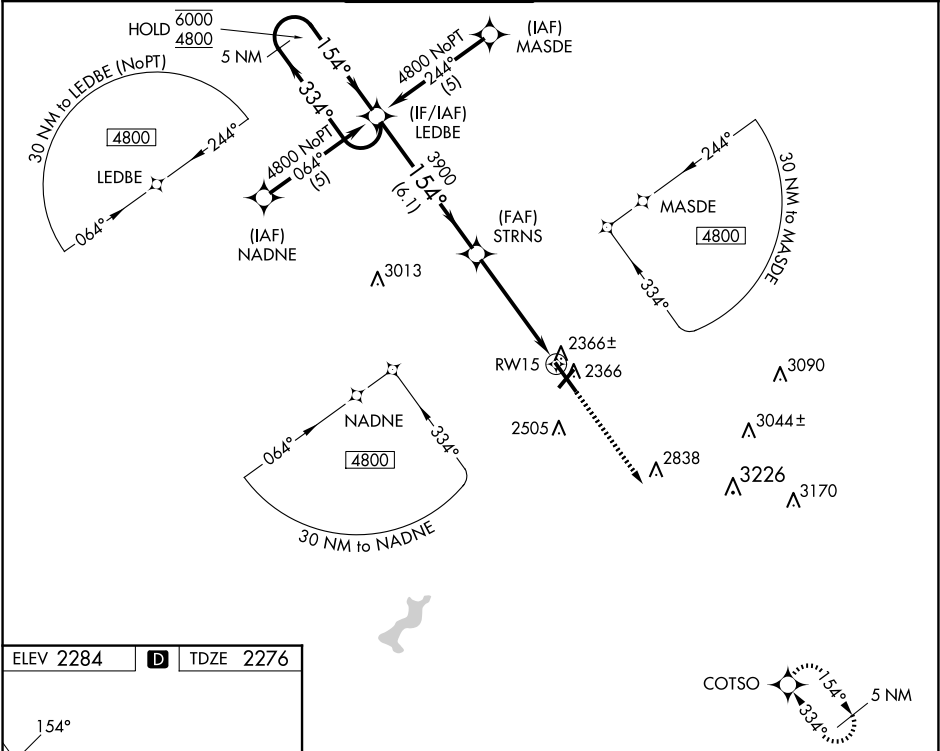


WAAS CH 53513 W15A	APP CRS 154°	Rwy Idg TDZE Apt Elev	6698 2276 2284
--	------------------------	-----------------------------	---

RNAV (GPS) RWY 15

JOHN MURTHA JOHNSTOWN/CAMBRIA COUNTY (JST)

RNP APCH - GPS.		MISSED APPROACH: Climb to 4900 direct COTSO and hold.	
Baro-VNAV NA.			
ATIS 118.325	JOHNSTOWN APP CON ★ 121.2 299.2	JOHNSTOWN TOWER ★ 125.75 (CTAF) 0	GND CON 121.6
		CLNC DEL 126.85 235.775	UNICOM 122.95



5 NM Holding Pattern		LEDBE	STRNS	4900	COTSO
6000 ← 334°		4800 → 154°	3900	↑	✱
GP 3.00° TCH 52		3900	*1.1 NM to RWY15	*LNAV only	
		6.1 NM	3.8 NM	1.1	
CATEGORY	A	B	C	D	
LPV DA	2526-¾		250 (300-¾)		
LNAV/VNAV DA	2595-1		319 (400-1)		
LNAV MDA	2680-1	404 (400-1)	2680-1½ 404 (400-1½)	2680-1¼ 404 (400-1¼)	
CIRCLING	2700-1 416 (500-1)	2880-1 596 (600-1)	2880-1½ 596 (600-1½)	3000-2¼ 716 (800-2¼)	