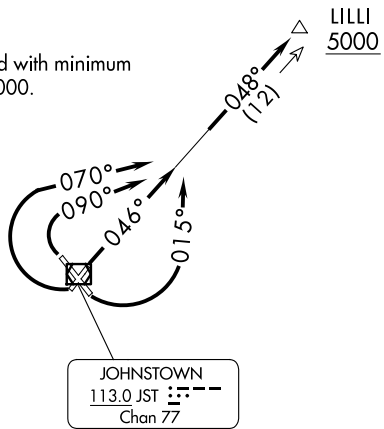


JOHNSTOWN DEP CON ★  
121.2 299.2  
ATIS  
118.325  
CLNC DEL  
126.85 235.775  
GND CON  
121.6  
JOHNSTOWN TOWER ★  
125.75 (CTAF)  
CLEVELAND CENTER  
124.4 327.1

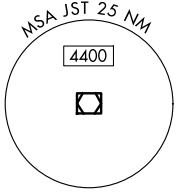
DME and RADAR required.

TOP ALTITUDE:  
ASSIGNED BY ATC

TAKEOFF MINIMUMS:  
Rwy 5, 15, 23, 33: Standard with minimum  
ATC climb of 235'/NM to 5000.



NOTE: During VFR conditions  
watch for opposing traffic  
on JST R-048.



NOTE: Chart not to scale.

DEPARTURE ROUTE DESCRIPTION

TAKEOFF RUNWAY 5: Climb on heading 046° to intercept JST R-048, thence....  
TAKEOFF RUNWAY 15: Climbing left turn heading 015° to intercept JST R-048, thence....  
TAKEOFF RUNWAY 23: Climbing right turn heading 070° to intercept JST R-048, thence....  
TAKEOFF RUNWAY 33: Climbing right turn heading 090° to intercept JST R-048, thence....  
....on JST R-048 to cross LILLI/JST 12 DME at or above 5000 then on (assigned route).