

LOC I-JST  
**110.1**

APP CRS  
**334°**

Rwy Idg  
TDZE  
Apt Elev  
**6484**  
**2281**  
**2284**

ILS or LOC RWY 33

JOHN MURTHA JOHNSTOWN/CAMBRIA COUNTY (JST')

DME required.  
▼ Glide slope unusable beyond 5 degrees left of course.  
▲ For inop ALS, increase S-LOC 33 Cat C/D visibility to ¾ SM.

MALSR

MISSED APPROACH: Climb to 3700 then climbing right turn to 4600 direct JST VOR/DME and hold, continue climb-in-hold to 4600.

ATIS  
**118.325**

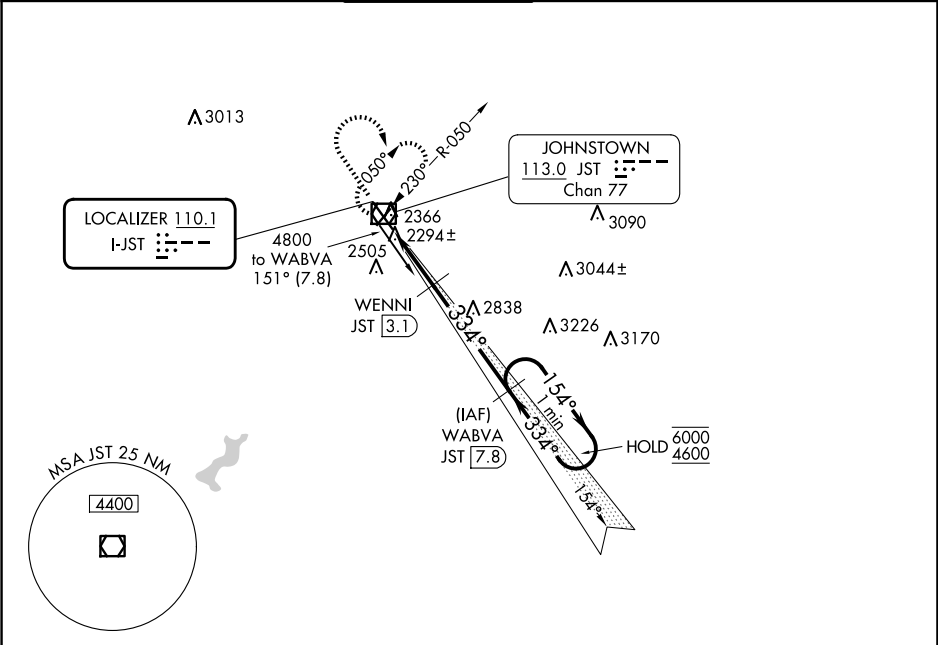
JOHNSTOWN APP CON ★  
**121.2 299.2**

JOHNSTOWN TOWER ★  
**125.75 (CTAF) 0**

GND CON  
**121.6**

CLNC DEL  
**126.85 235.775**

UNICOM  
**122.95**



ELEV 2284

D

TDZE 2281

REIL Rwy 5 and 23  
HIRL Rwy 15-33  
MIRL Rwy 5-23

3700

4600

JST

VGSI and ILS glidepath not coincident (VGSI Angle 3.00/TCH 53).

One Minute Holding Pattern

WABVA JST [7.8]

WENNI JST [3.1]

JST [0.6]

JST [1.5]

3140

3100

334°

154°

6000

4600

GS 3.00° TCH 58

0.9

1.6

4.7 NM

CATEGORY	A	B	C	D
S-ILS 33	2481-½	200 (200-½)		
S-LOC 33	2600-½	319 (400-½)		
CIRCLING	2700-1 416 (500-1)	2880-1 596 (600-1)	2880-1½ 596 (600-1½)	3000-2¼ 716 (800-2¼)