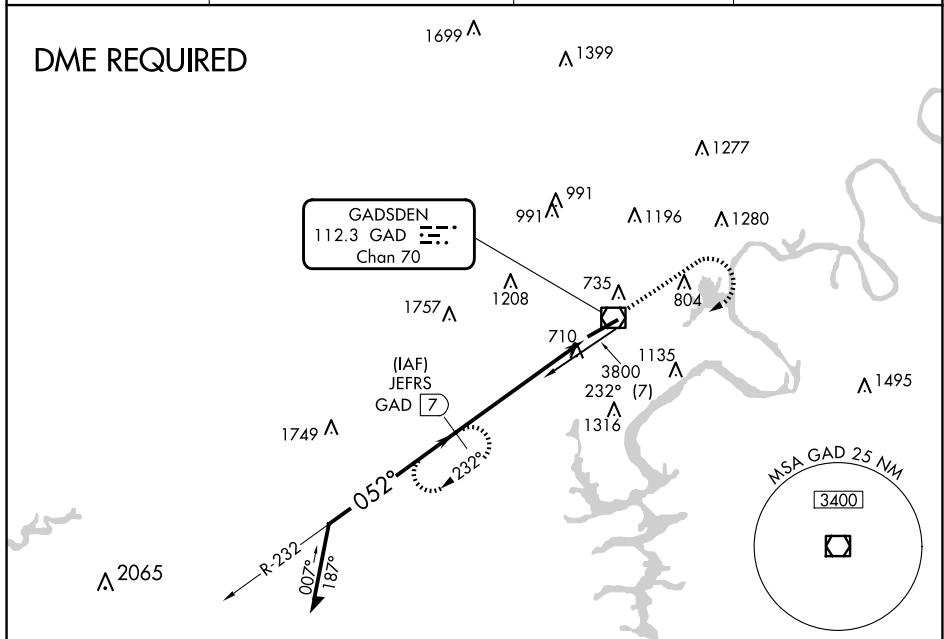


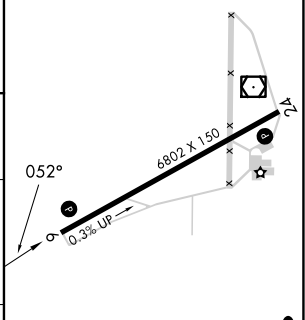
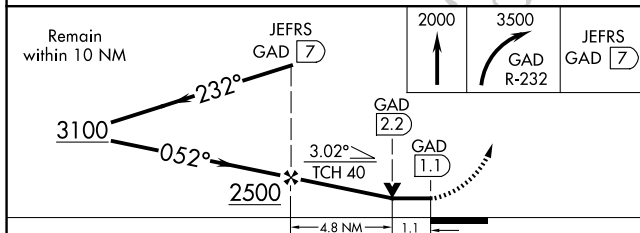
VOR RWY 6  
NORTHEAST ALABAMA RGNL (GAD)

**MISSED APPROACH:** Climb to 2000 then climbing right turn to 3500 on GAD VOR/DME R-232 to JEFRS/7 DME and hold.

AWOS-3PT <b>127.825</b>	BIRMINGHAM APP CON <b>125.45 279.65</b>	CLNC DEL <b>120.05 257.7</b>	UNICOM <b>122.725</b> (CTAF) <b>0</b>
----------------------------	--	---------------------------------	--



ELEV	569		TDZE	569
------	-----	--	------	-----



CATEGORY	A	B	C	D	HURL Rwy 6-24 REIL Rwys 6 and 24							
S-6	960-1 391 (400-1)		960-1 $\frac{1}{8}$ 391 (400-1 $\frac{1}{8}$ )		FAF to MAP 5.9 NM							
CIRCLING	1100-1 531 (600-1)		1440-2 $\frac{1}{2}$ 871 (900-2 $\frac{1}{2}$ )		1680-3 1111 (1200-3)		Knots	60	90	120	150	180
							Min:Sec	5:54	3:56	2:57	2:22	1:58

SE-4, 10 JUL 2025 to 07 AUG 2025