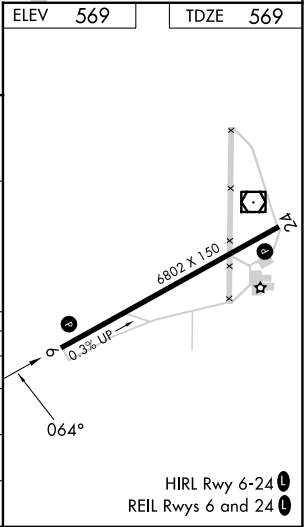
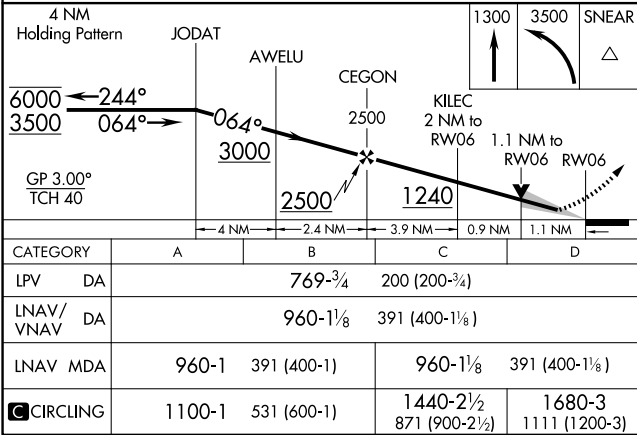
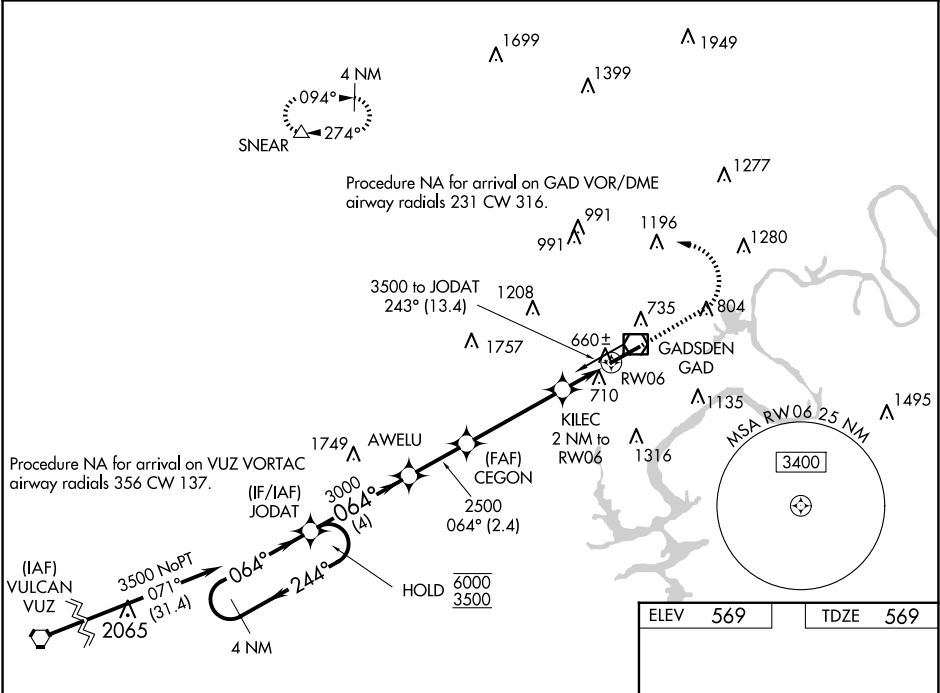


WAAS	APP CRS	Rwy Ldg	6802
CH 65706	064°	TDZE	569
W06A		Apt Elev	569

RNAV (GPS) RWY 6

NORTHEAST ALABAMA RGNL (GAD)

RNP APCH-GPS.		MISSED APPROACH: Climb to 1300 then climbing left turn to 3500 direct SNEAR and hold.	
Baro-VNAV and VDP NA when using Anniston altimeter setting. For uncompensated Baro-VNAV systems, LNAV/VNAV NA below -16°C or above 54°C. When local altimeter not received, use Anniston altimeter setting and increase LPV DA to 835, LNAV/VNAV DA to 1040 and all MDA 80 feet; increase LPV all Cats visibility 1/8 SM, LNAV/VNAV all Cats 1/4 SM and increase LNAV Cats C/D and Circling Cat C visibility 1/4 SM.			
AWOS-3PT 127.825	BIRMINGHAM APP CON 125.45 279.65	CLNC DEL 120.05 257.7	UNICOM 122.725 (CTAF) 0



SE-4, 10 JUL 2025 to 07 AUG 2025

SE-4, 10 JUL 2025 to 07 AUG 2025