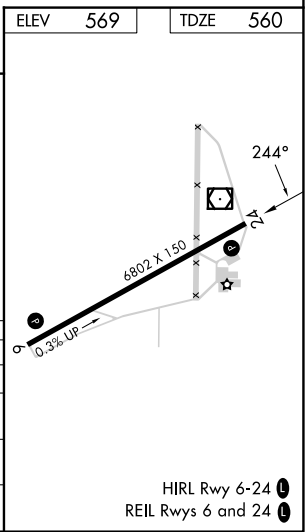
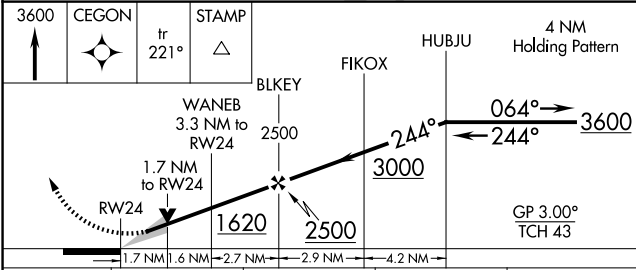
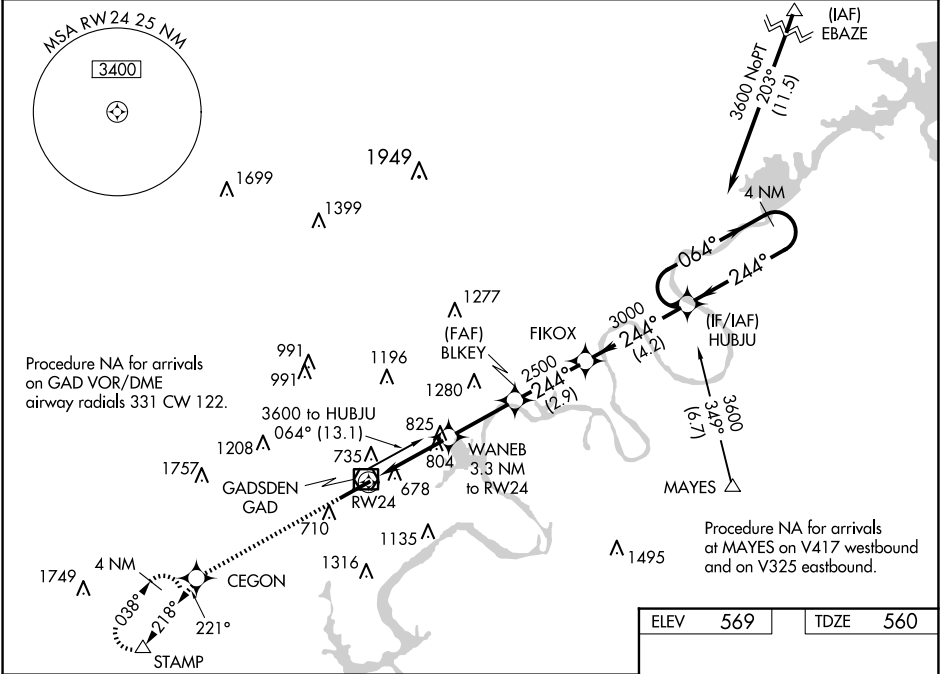


WAAS CH 65905 W24A	APP CRS 244°	Rwy Ldg TDZE 560 Apt Elev 569
--	------------------------	---

RNAV (GPS) RWY 24
NORTHEAST ALABAMA RGNL (GAD)

RNP APCH-GPS. ▼ For uncompensated Baro-VNAV systems, LNAV/VNAV NA below -16°C or above 54°C. ▲ When local altimeter setting is not received, use Anniston altimeter setting and increase LPV DA to 847 feet and all visibilities ½ SM; increase LNAV/VNAV DA to 1082 feet and all visibilities ½ SM; increase all MDAs 80 feet and LNAV visibility Cat C/D ¼ SM, and Circling visibility Cat C ½ SM. Baro-VNAV and VDP NA when using Anniston altimeter setting.	MISSED APPROACH: Climb to 3600 direct CEGON and on track 221° to STAMP and hold, continue climb-in-hold to 3600.
--	--

AWOS-3PT 127.825	BIRMINGHAM APP CON 125.45 279.65	CLNC DEL 120.05 257.7	UNICOM 122.725 (CTAF) 0
----------------------------	--	---------------------------------	-----------------------------------



CATEGORY	A	B	C	D
LPV DA		781-¾	221 (300-¾)	
LNAV/VNAV DA		1016-1⅜	456 (500-1⅜)	
LNAV MDA	1140-1	580 (600-1)	1140-1⅝	580 (600-1⅝)
CIRCLING	1140-1	571 (600-1)	1440-2½ 871 (900-2½)	1680-3 1111 (1200-3)

SE-4, 10 JUL 2025 to 07 AUG 2025

SE-4, 10 JUL 2025 to 07 AUG 2025