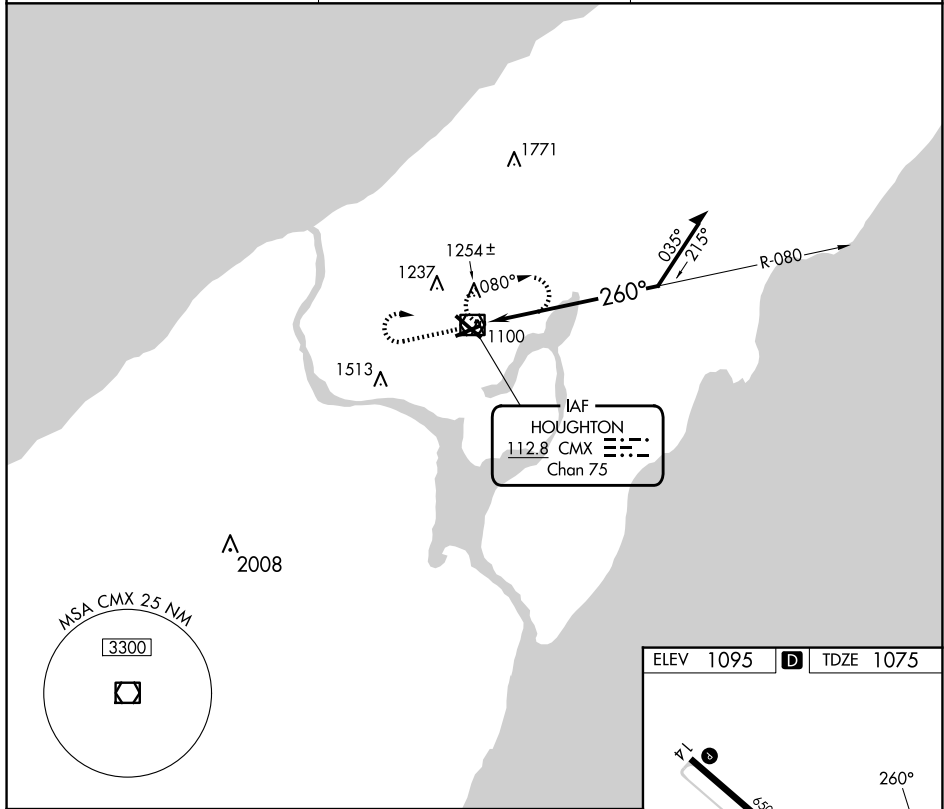


VOR RWY 25  
HOUGHTON COUNTY MEML (CMX)

**MISSED APPROACH:** Climb to 3100 then right turn direct CMX VOR/DME and hold.

ASOS <b>125.675</b>	MINNEAPOLIS CENTER <b>133.55 379.1</b>	UNICOM <b>122.7 (CTAF) 0</b>
------------------------	---	---------------------------------



3100

CMX


CMX VOR/DME

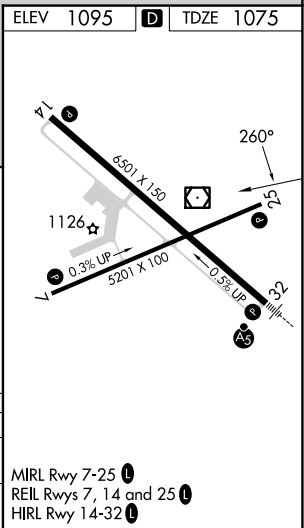
080°

260°

3100

Remain within 10 NM

CATEGORY	A	B	C	D
S-25	1620-1 545 (600-1)		1620-1 $\frac{5}{8}$ 545 (600-1 $\frac{5}{8}$ )	1620 1 $\frac{3}{4}$ 545 (600-1 $\frac{3}{4}$ )
 CIRCLING	1620-1 525 (600-1)	1660-1 565 (600-1)	1700-1 $\frac{3}{4}$ 605 (700-1 $\frac{3}{4}$ )	1820-2 $\frac{1}{4}$ 725 (800-2 $\frac{1}{4}$ )



EC-1, 10 JUL 2025 to 07 AUG 2025

EC-1, 10 JUL 2025 to 07 AUG 2025