

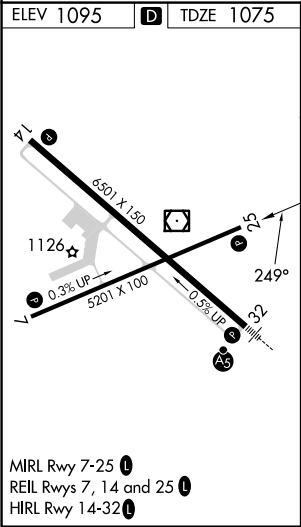
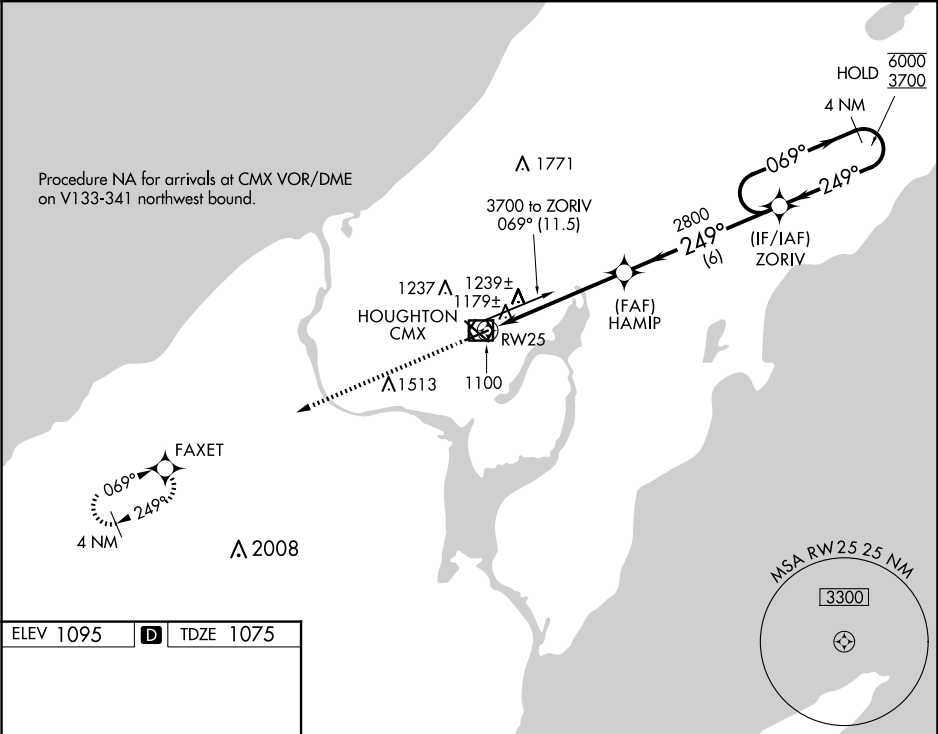
WAAS CH <b>86634</b> <b>W25A</b>	APP CRS <b>249°</b>	Rwy Idg TDZE Apt Elev	<b>5201</b> <b>1075</b> <b>1095</b>
--	------------------------	-----------------------------	---



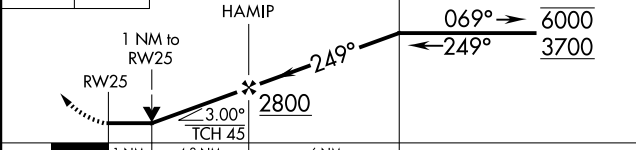

**RNAV (GPS) RWY 25**  
HOUGHTON COUNTY MEML (CMX)

RNP APCH.

<div><div>▼</div><div>▲</div></div> <p>Rwy 25 helicopter visibility reduction below ¾ SM NA.</p>	MISSED APPROACH: Climb to 3700 direct FAXET and hold.
--	---

ASOS <b>125.675</b>	MINNEAPOLIS CENTER <b>133.55 379.1</b>	UNICOM <b>122.7 (CTAF) 0</b>
------------------------	---	---------------------------------



<div>3700</div> <div></div>		<div>FAXET</div> <div></div>		<div>VGSI and descent angles not coincident (VGSI Angle 3.00/TCH 41).</div>		<div>4 NM Holding Pattern</div>			
<div></div>									
CATEGORY		A		B		C		D	
LP MDA		1440-1		365 (400-1)					
LNAV MDA		1500-1 425 (500-1)		1500-1¼ 425 (500-1¼)					
<div> CIRCLING</div>		1620-1 525 (600-1)		1660-1 565 (600-1)		1700-1¾ 605 (700-1¾)		1820-2¼ 725 (800-2¼)	

EC-1, 10 JUL 2025 to 07 AUG 2025

EC-1, 10 JUL 2025 to 07 AUG 2025