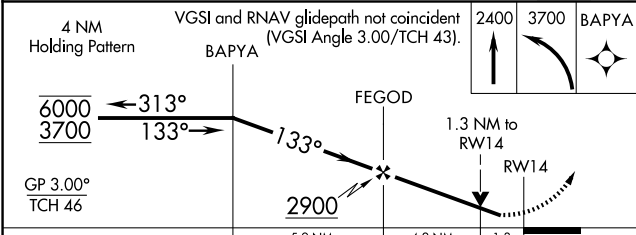
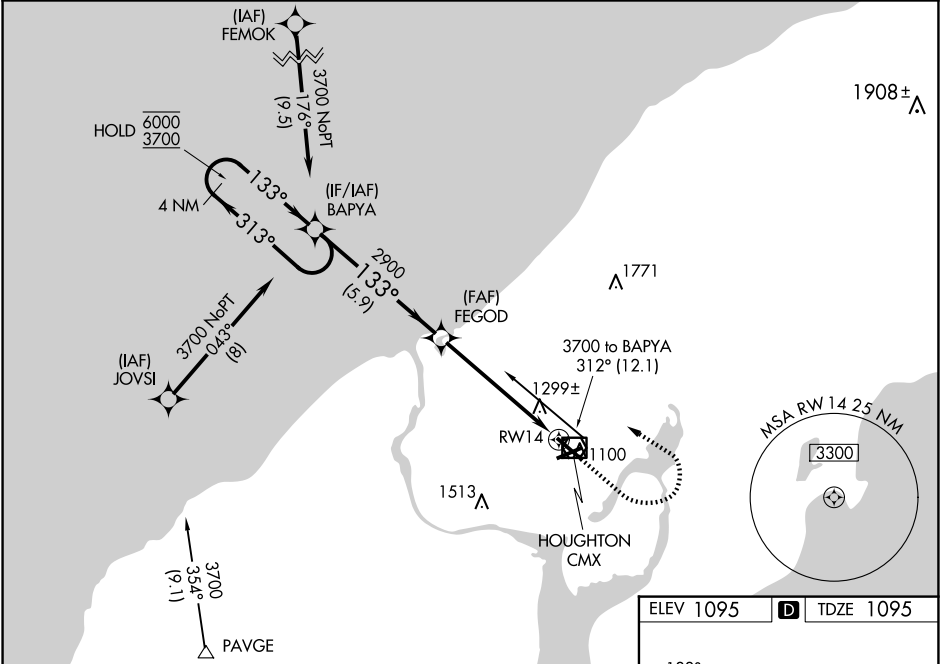


WAAS CH <b>93533</b> <b>W14A</b>	APP CRS <b>133°</b>	Rwy Idg TDZE Apt Elev	<b>6501</b> <b>1095</b> <b>1095</b>
--	------------------------	-----------------------------	---

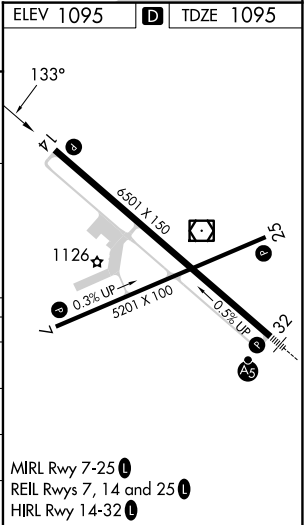
RNAV (GPS) RWY 14  
HOUGHTON COUNTY MEML (CMX)

RNP APCH - GPS.	MISSED APPROACH: Climb to 2400 then climbing left turn to 3700 direct BAPYA and hold.
<div><div></div><div>Rwy 14 helicopter visibility reduction below ¾ SM NA. For uncompensated Baro-VNAV systems, LNAV/VNAV NA below -21°C or above 54°C.</div></div>	

ASOS <b>125.675</b>	MINNEAPOLIS CENTER <b>133.55 379.1</b>	UNICOM <b>122.7 (CTAF)</b>
------------------------	---	-------------------------------



CATEGORY	A	B	C	D
LPV DA	1414-7⁄8	319 (400-7⁄8)		
LNAV/VNAV DA	1626-1½	531 (600-1½)		
LNAV MDA	1560-1	465 (500-1)	1560-1¾	465 (500-1¾)
CIRCLING	1620-1 525 (600-1)	1660-1 565 (600-1)	1700-1¾ 605 (700-1¾)	1820-2¼ 725 (800-2¼)



EC-1, 10 JUL 2025 to 07 AUG 2025

EC-1, 10 JUL 2025 to 07 AUG 2025