

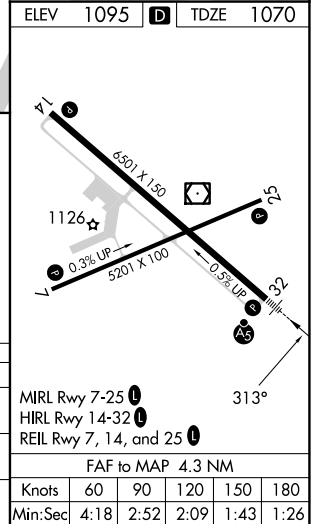
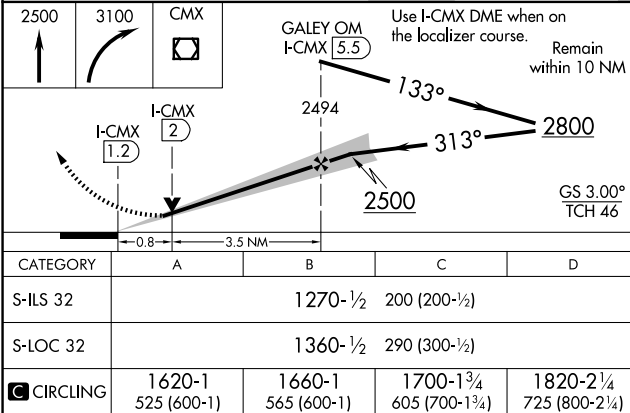
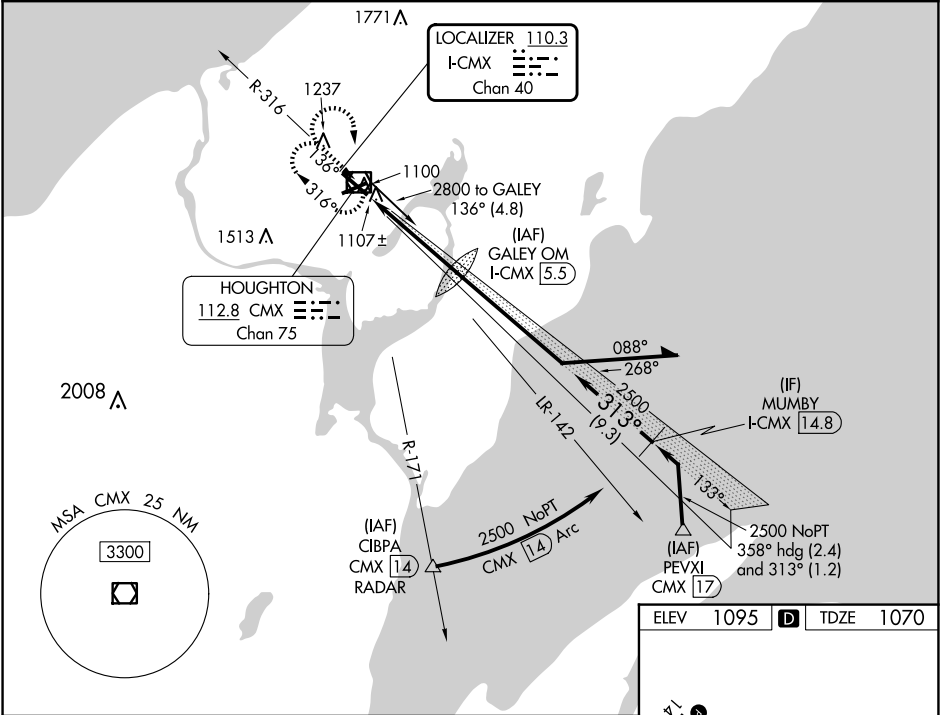


LOC/DME I-CMX <b>110.3</b> Chan <b>40</b>	APP CRS <b>313°</b>	Rwy Idg TDZE Apt Elev <b>6501</b> <b>1070</b> <b>1095</b>
---	------------------------	--

ILS or LOC RWY 32  
HOUGHTON COUNTY MEML (CMX)

DME required for procedure entry.		MALSR 	MISSED APPROACH: Climb to 2500 then climbing right turn to 3100 direct CMX VOR/DME and hold.
	For inop ALS, increase S-LOC 32 Cat C/D visibility to ¾ SM.		

ASOS <b>125.675</b>	MINNEAPOLIS CENTER <b>133.55 379.1</b>	UNICOM <b>122.7 (CTAF) 0</b>
------------------------	---	---------------------------------



EC-1, 10 JUL 2025 to 07 AUG 2025

EC-1, 10 JUL 2025 to 07 AUG 2025