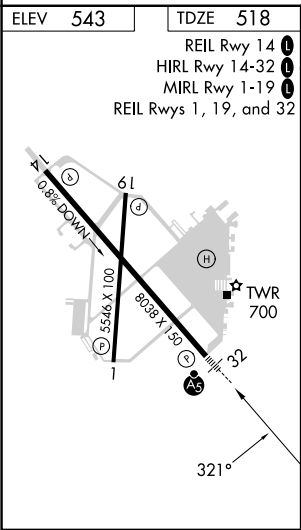
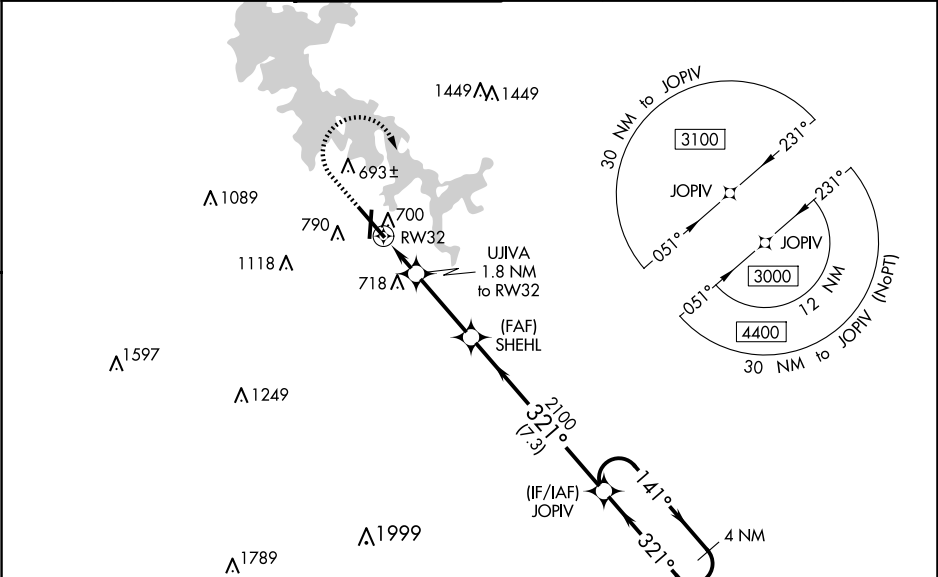


WAAS CH 93512 W32A	APP CRS 321°	Rwy Idg TDZE 518 Apt Elev 543
--	------------------------	---

RNAV (GPS) RWY 32

SMYRNA (MQY)

<div><div><div>▼</div><div>▲</div></div><div>For uncompensated Baro-VNAV systems, LNAV/VNAV NA below -16°C (4°F) or above 54°C (130°F). DME/DME RNP-0.3 NA. For inop MALSr when using Nashville Intl altimeter setting, increase LNAV/VNAV all Cats visibility to 1½ mile. When local altimeter setting not received, use Nashville Intl altimeter setting and increase LPV DA to 749 feet, LNAV/VNAV DA to 998 feet, and all MDA 40 feet; increase LNAV Cats C/D visibility ½ mile and increase Circling Cat C visibility ¼ mile. Baro-VNAV and VDP NA when using Nashville Intl altimeter setting.</div></div>					<div>MALSr</div> <div><div><div><div></div></div><div></div></div><div>AS</div></div>	<div>MISSED APPROACH:</div> <div>Climb to 1500 then climbing right turn to 3000 direct JOPIV and hold.</div>
AWOS-3PT 119.125	NASHVILLE APP CON 118.4 360.7	SMYRNA TOWER ★ 118.5 (CTAF) 233.1	GND CON 121.4	CLNC DEL 121.4	CLNC DEL 121.7 (When twr closed)	UNICOM 122.95



1500 ↑		3000 ↷		JOPIV ✦		VGSI and RNAV glidepath not coincident (VGSI Angle 3.00/TCH 57).		4 NM Holding Pattern	
*LNAV only		RW32 ↶		*1.2 NM to RW32		UJIVA 1.8 NM to RW32		SHEHL 2100	
		1.2 NM		0.6 NM		3 NM		7.3 NM	
				*1140		2100		321°	
								141°	
								3000	
								GP 3.00° TCH 51°	
CATEGORY		A		B		C		D	
LPV DA				718-½		200 (200-½)			
LNAV/ VNAV DA				967-1		449 (500-1)			
LNAV MDA		960-½ 442 (500-½)				960-⅞ 442 (500-⅞)			
CIRCLING		1100-1 557 (600-1)		1200-1 657 (700-1)		1260-2 717 (800-2)		1480-3 937 (1000-3)	