

WAAS CH 86632 W01A	APP CRS 006°	Rwy Idg TDZE 519 Apt Elev 543
--	------------------------	---

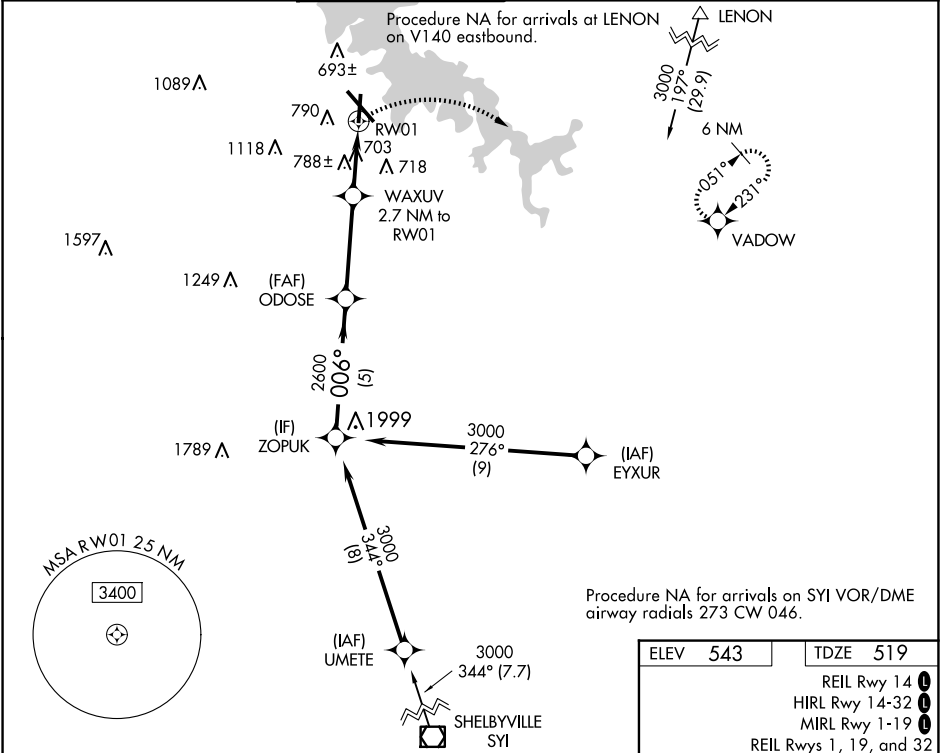
RNAV (GPS) RWY 1

SMYRNA (MQY)

DME/DME RNP-0.3 NA. When local altimeter setting not received, use Nashville Intl altimeter setting and increase all MDA 40.
Helicopter visibility reduction below ¾ SM NA.

MISSED APPROACH: Climbing right turn to 3000 direct VADOW and hold.

AWOS-3PT 119.125	NASHVILLE APP CON 118.4 360.7	SMYRNA TOWER ★ 118.5 (CTAF) 0 233.1	GND CON 121.4	CLNC DEL 121.4	CLNC DEL 121.7 (When twr closed)	UNICOM 122.95
----------------------------	---	---	-------------------------	--------------------------	---	-------------------------



ZOPUK		VGSIs and descent angles not coincident (VGSIs Angle 3.00/TCH 27).		3000	VADOW
3000		006°			
2600		3.00° TCH 45			
1420		1.3 NM to RW01			
5 NM		3.7 NM		1.4 NM	
CATEGORY	A	B	C	D	
LP MDA	960-1	441 (500-1)	960-1¾	441 (500-1¾)	
LNAV MDA	1100-1	581 (600-1)	1100-1¾	581 (600-1¾)	
CIRCLING	1100-1 557 (600-1)	1200-1 657 (700-1)	1240-2 697 (700-2)	1480-3 937 (1000-3)	

ELEV 543

TDZE 519

REIL Rwy 14

HIRL Rwy 14-32

MIRL Rwy 1-19

REIL Rws 1, 19, and 32

61

5546 X 100

8038 X 150

32

006°