

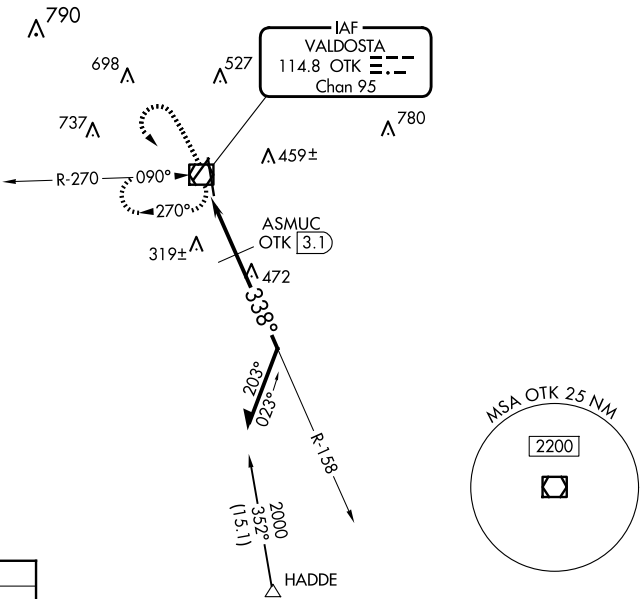
VOR/DME OTK	APP CRS	Rwy Idg	8002
114.8	338°	TDZE	200
Chan 95		Apt Elev	203

VOR RWY 36  
VALDOSTA RGNL (VLD)

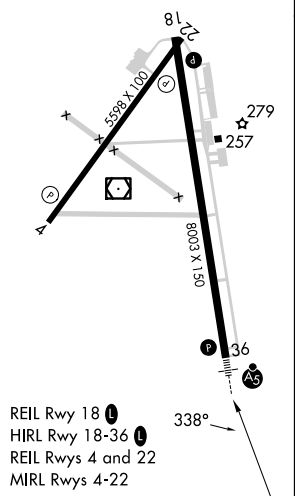
**V** Rwy 36 helicopter visibility reduction below ¾ SM NA. For inop ALS, increase S-36 Cats A/B visibility to 1 SM and Cats C/D to 1½ SM; **A** ASMUC FIX MINIMUMS: increase S-36 all Cats visibility to 1 SM.

**MALS** MISSED APPROACH: Climb to 1200 then climbing left turn to 2000 direct OTK VOR/DME and hold, continue climb-in-hold to 2000.

ASOS	VALDOSTA APP CON *	VALDOSTA TOWER *	GND CON	UNICOM
126.225	126.6 285.6	128.35 (CTAF) 0	121.7	122.95



ELEV 203	D	TDZE 200
----------	---	----------



1200	2000	OTK	OTK VOR/DME	158°	1800	780	338°	1.9	3.1	1.3 NM	1 NM
Remain within 10 NM											
CATEGORY	A	B	C	D							
S-36	780-¾	580 (600-¾)	780-1¼	580 (600-1¼)							
CIRCLING	780-1	577 (600-1)	900-2 697 (700-2)	1020-2¾ 817 (900-2¾)							
ASMUC FIX MINIMUMS											
S-36	580-¾ 380 (400-¾)										
CIRCLING	640-1 437 (500-1)	700-1 497 (500-1)	900-2 697 (700-2)	1020-2¾ 817 (900-2¾)							

SE-4, 10 JUL 2025 to 07 AUG 2025

SE-4, 10 JUL 2025 to 07 AUG 2025