

WAAS CH <b>86206</b> <b>W36A</b>	APP CRS <b>356°</b>	Rwy Idg <b>8002</b> TDZE <b>200</b> Apt Elev <b>203</b>
--	------------------------	---

RNAV (GPS) RWY 36  
VALDOSTA RGNL (VLD)

RNP APCH - GPS.

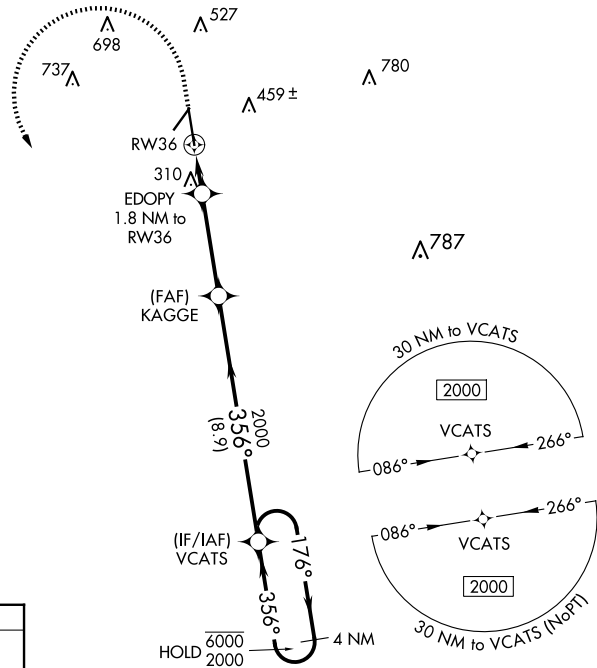


For uncompensated Baro-VNAV systems, LNAV/VNAV NA below -4°C or above 54°C. Rwy 36 helicopter visibility reduction below  $\frac{3}{4}$  SM NA. For inop ALS, increase LPV and LNAV/VNAV all Cats visibility to  $\frac{7}{8}$  SM and LNAV all Cats visibility to 1 SM.

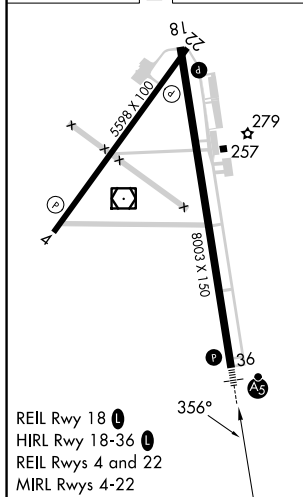


**MISSED APPROACH:** Climb to 700 then climbing left turn to 2000 direct VCATS and hold.

ASOS 126.225	VALDOSTA APP CON ★ 126.6 285.6	VALDOSTA TOWER ★ 128.35 (CTAF) 0	GND CON 121.7	UNICOM 122.95
-----------------	-----------------------------------	-------------------------------------	------------------	------------------



ELEV 203	<b>D</b>	TDZE 200
----------	----------	----------

[illegible]

CATEGORY	A	B	C	D
LPV DA	489- <sup>3</sup> / <sub>4</sub> 289 (300- <sup>3</sup> / <sub>4</sub> )			
RNAV/ VNAV DA	482- <sup>3</sup> / <sub>4</sub> 282 (300- <sup>3</sup> / <sub>4</sub> )			
RNAV MDA	560- <sup>3</sup> / <sub>4</sub> 360 (400- <sup>3</sup> / <sub>4</sub> )			
CIRCLING	640-1 437 (500-1)	700-1 497 (500-1)	900-2 697 (700-2)	1020-2 <sup>3</sup> / <sub>4</sub> 817 (900-2 <sup>3</sup> / <sub>4</sub> )