

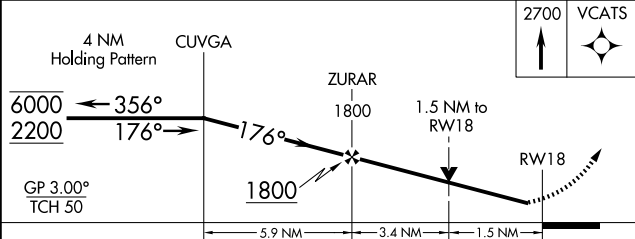
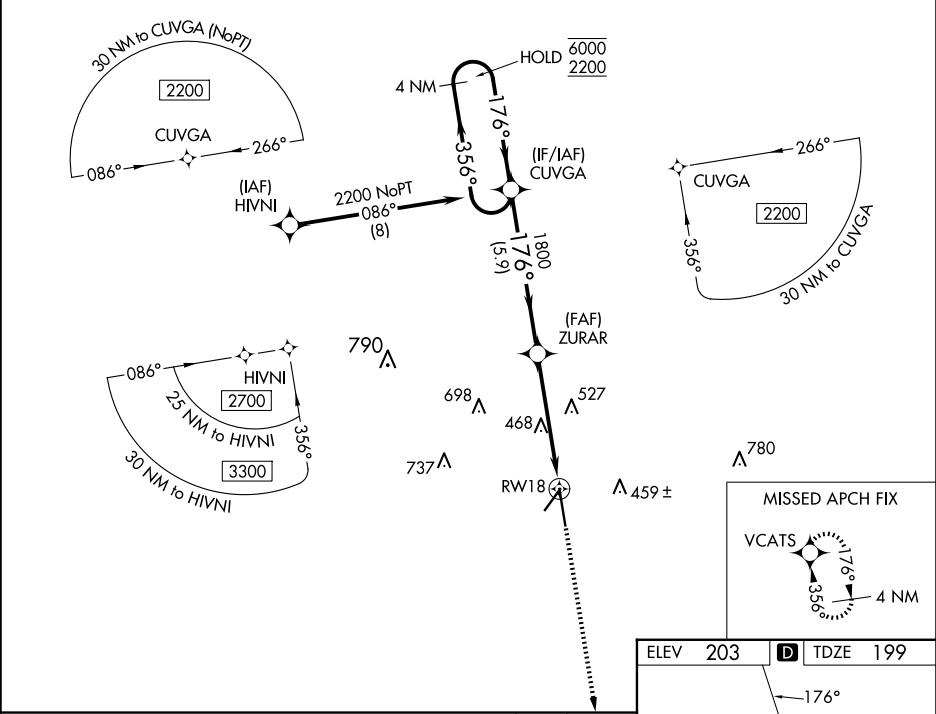
WAAS CH <b>87101</b> <b>W18A</b>	APP CRS <b>176°</b>	Rwy Idg TDZE <b>199</b> Apt Elev <b>203</b>
--	------------------------	---

RNAV (GPS) RWY 18

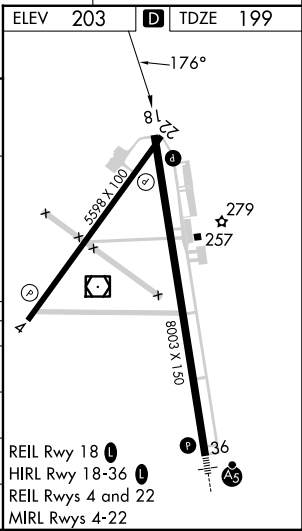
VALDOSTA RGNL (VLD)

RNP APCH - GPS.	<div><div>▼</div><div>▲</div></div> Rwy 18 helicopter visibility reduction below ¾ SM NA. For uncompensated Baro-VNAV systems, LNAV/VNAV NA below -4°C or above 54°C.	MISSED APPROACH: Climb to 2700 direct VCATS and hold.
-----------------	---	---

ASOS <b>126.225</b>	VALDOSTA APP CON ★ <b>126.6 285.6</b>	VALDOSTA TOWER ★ <b>128.35 (CTAF) 0</b>	GND CON <b>121.7</b>	UNICOM <b>122.95</b>
------------------------	--	--	-------------------------	-------------------------



CATEGORY	A	B	C	D
LPV DA		454-¾ 255 (300-¾)		
LNAV/VNAV DA		458-¾ 259 (300-¾)		
LNAV MDA	720-1 521 (600-1)		720-1½ 521 (600-1½)	
CIRCLING	720-1 517 (600-1)		900-2 697 (700-2)	1020-2¾ 817 (900-2¾)



SE-4, 10 JUL 2025 to 07 AUG 2025

SE-4, 10 JUL 2025 to 07 AUG 2025