

LOC I-VLD	APP CRS	Rwy Idg
110.9	356°	8002
	TDZE	200
	Appt Elev	203

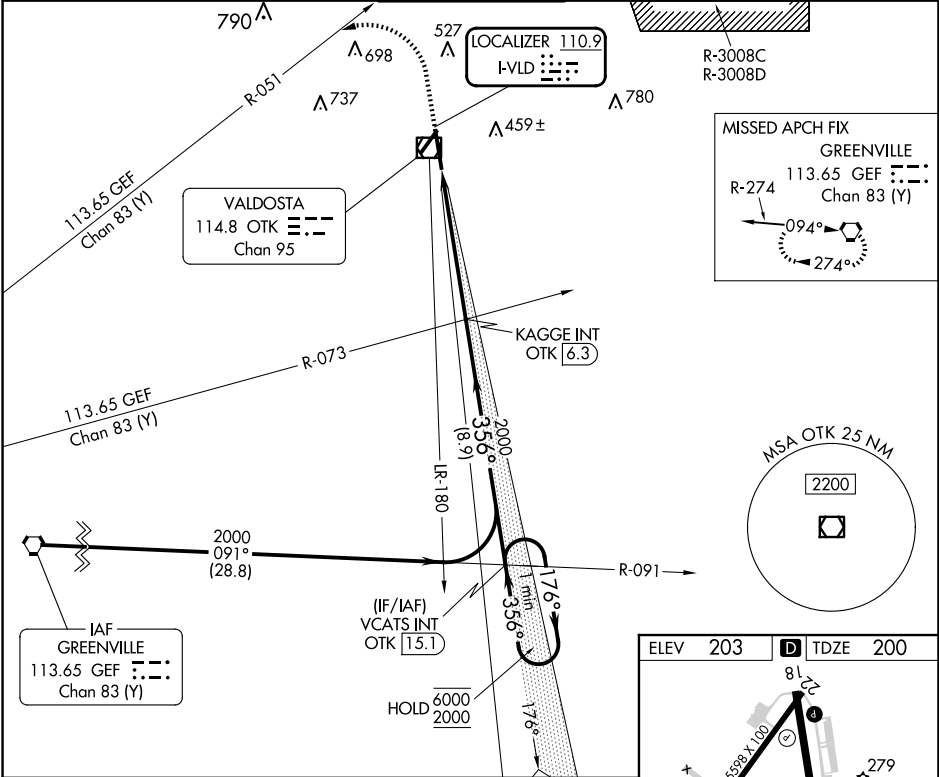
ILS or LOC RWY 36
VALDOSTA RGNL (VLD)

⚠ Rwy 36 helicopter visibility reduction below 3/4 SM NA. DME from OTK VOR/DME. DME use requires simultaneous reception of I-VLD and OTK DME. For inop ALS, increase S-ILS 36 all Cats visibility to 1/8 SM, increase S-LOC 36 Cats A and B visibility to 1 SM and Cat E visibility to 1 1/4 SM.

MALSR

MISSED APPROACH: Climb to 1200 then climbing left turn to 2000 on heading 231° and GEF R-051 to GEF VORTAC and hold.

ASOS 126.225	VALDOSTA APP CON ★ 126.6 285.6	VALDOSTA TOWER ★ 128.35 (CTAF)	GND CON 121.7	UNICOM 122.95
------------------------	--	--	-------------------------	-------------------------



1200	2000	GEF	OTK	KAGGE INT OTK 6.3	VCATS INT OTK 15.1	One Minute Holding Pattern
hdg 231°	R-051	GEF	OTK 2	2000	176°	6000
OTK 0.8	OTK 2	356°	176°	356°	2000	GS 3.00° TCH 53
1.2 NM	4.3 NM	8.9 NM				
CATEGORY	A	B	C	D	E	
S-ILS 36		489-3/4	289 (300-3/4)			
S-LOC 36		640-3/4	440 (500-3/4)			
CIRCLING	640-1 437 (500-1)	700-1 497 (500-1)	900-2 697 (700-1)	1020-2 3/4 817 (900-2 3/4)	1040-3 837 (900-3)	

SE-4, 10 JUL 2025 to 07 AUG 2025

SE-4, 10 JUL 2025 to 07 AUG 2025