

WAAS CH 42700 W28A	APP CRS 281°	Rwy Idg TDZE Apt Elev	6003 85 85
--	------------------------	-----------------------------	---------------------------------------

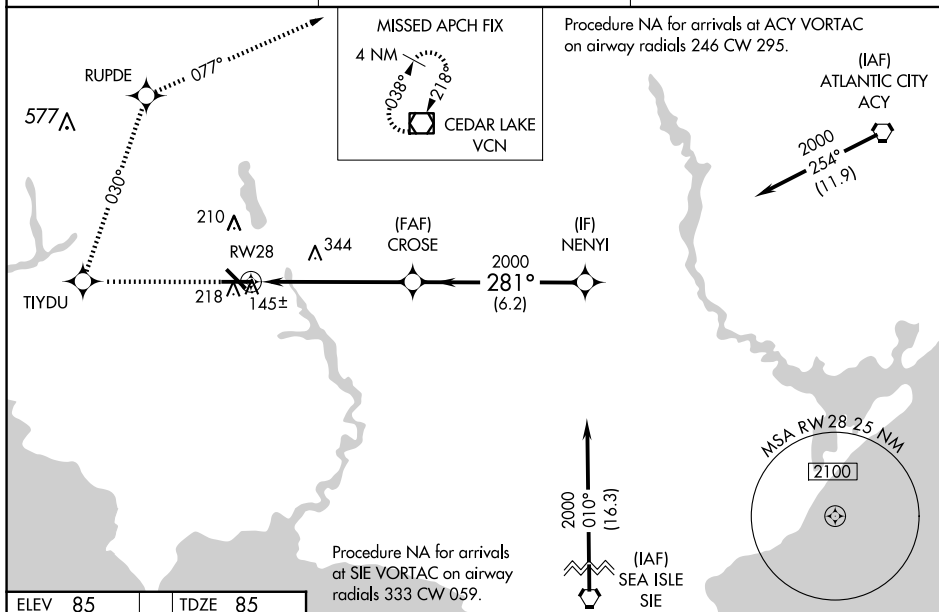
RNAV (GPS) RWY 28
MILLVILLE MUNI (MIV)

RNP APCH-GPS.

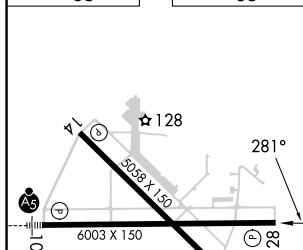
T For uncompensated Baro-VNAV systems, LNAV/VNAV NA below -15°C or above 54°C. When local altimeter setting not received, use Atlantic City altimeter setting and increase all DA/MDA 60 feet; increase LNAV/VNAV all Cats, LNAV Cats C/D and Circling Cat C visibility ½ mile. VDP and Baro-VNAV NA when using Atlantic City altimeter setting.

MISSED APPROACH: Climb to 2000
direct TIYDU and right turn on track
030° to RUPDE and right turn 077°
track to VCN VOR/DME and hold.

ASOS 119.6	ATLANTIC CITY APP CON 124.6 327,125	UNICOM 123.0 (CTAF) 0
----------------------	---	---------------------------------



ELEV 85		TDZE 85
---------	--	---------



2000 ↑

TIYDU

RUPDE

tr 030°

tr 077°

VGN

VGS1 and RNAV glidepath not coincident (VGS1 Angle 3.00°/TCH 29)

CROSE

NYENY

281°

2000

2000

1.7 NM to RW28

RW28

1.7

4.1 NM

6.2 NM

GP 3.00° TCH 45

CATEGORY	A	B	C	D
LPV DA	344-1	259 (300-1)		
LNAV/VNAV DA	405-1	320 (400-1)		
LNAV MDA	640-1	555 (600-1)	640-1 1/2 555 (600-1 1/2)	640-1 3/4 555 (600-1 3/4)
CIRCLING	640-1	555 (600-1)	660-1 1/2 575 (600-1 1/2)	660-2 575 (600-2)