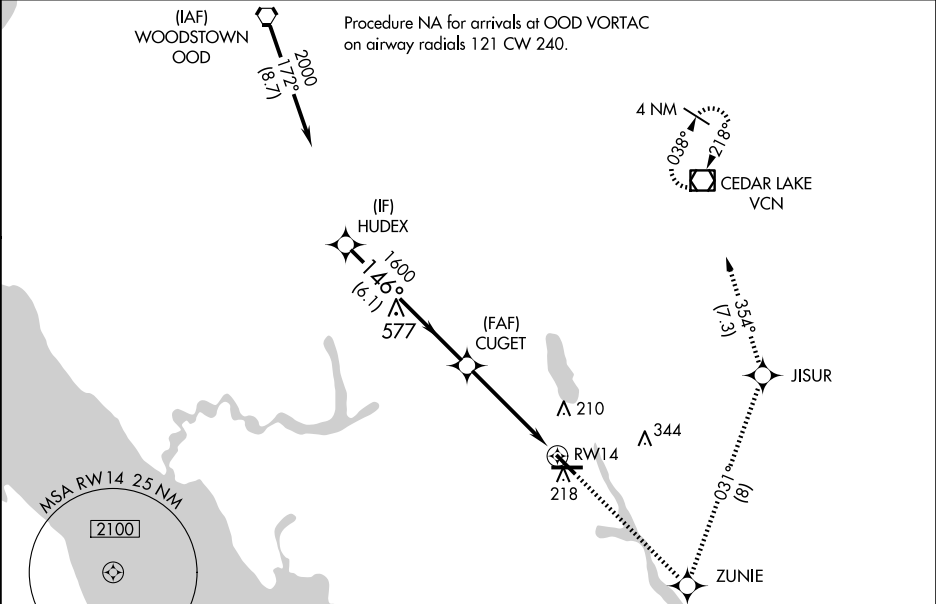


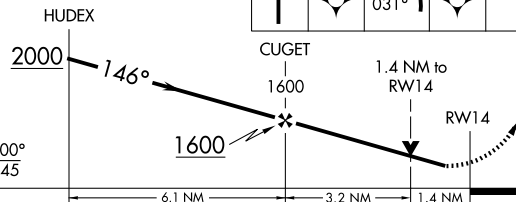
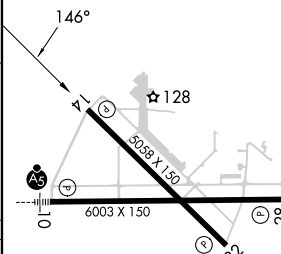
WAAS CH <b>82000</b> <b>W14A</b>	APP CRS <b>146°</b>	Rwy Idg TDZE Apt Elev	<b>5058</b> <b>81</b> <b>85</b>
--	------------------------	-----------------------------	---------------------------------------

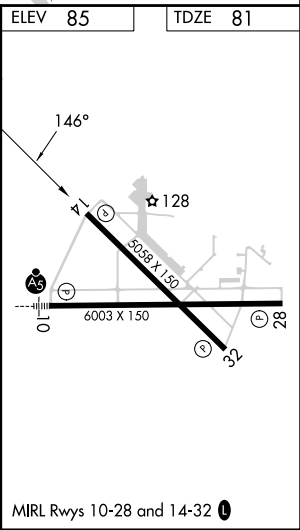
RNAV (GPS) RWY 14  
MILLVILLE MUNI (MIV)

RNP APCH+GPS.	MISSED APPROACH: Climb to 2000 direct ZUNIE and left turn on track 031° to JISUR and on track 354° to VCN VOR/DME and hold.
▼ Rwy 14 helicopter visibility reduction below ¾ SM NA. For uncompensated Baro-VNAV systems, LNAV/VNAV NA below -15°C or above 54°C.	

ASOS <b>119.6</b>	ATLANTIC CITY APP CON <b>124.6 327.125</b>	UNICOM <b>123.0 (CTAF) 0</b>
----------------------	---	---------------------------------



ELEV 85		TDZE 81					
VSGI and RNAV glidepath not coincident (VGS Angle 3.00/TCH 48).							
HUDEX		2000	ZUNIE	JISUR	VCN		
GP 3.00° TCH 45		↑	✦	tr 031°	✦	tr 354°	☐
							
CATEGORY	A	B	C	D			
LPV DA	377-7/8		296 (300-7/8)				
LNAV/ VNAV	DA	550-13/8		469 (500-13/8)			
LNAV MDA	580-1 499 (500-1)		580-13/8		499 (500-13/8)		
CIRCLING	580-1 495 (500-1)		660-11/2 575 (600-11/2)		660-2 575 (600-2)		
MIRL Rwy 10-28 and 14-32							



NE-2, 10 JUL 2025 to 07 AUG 2025

NE-2, 10 JUL 2025 to 07 AUG 2025