

LOC I-MIV 110.9	APP CRS 100°	Rwy Idg TDZE Apt Elev	6003 74 85
---------------------------	------------------------	-----------------------------	---------------------------------------

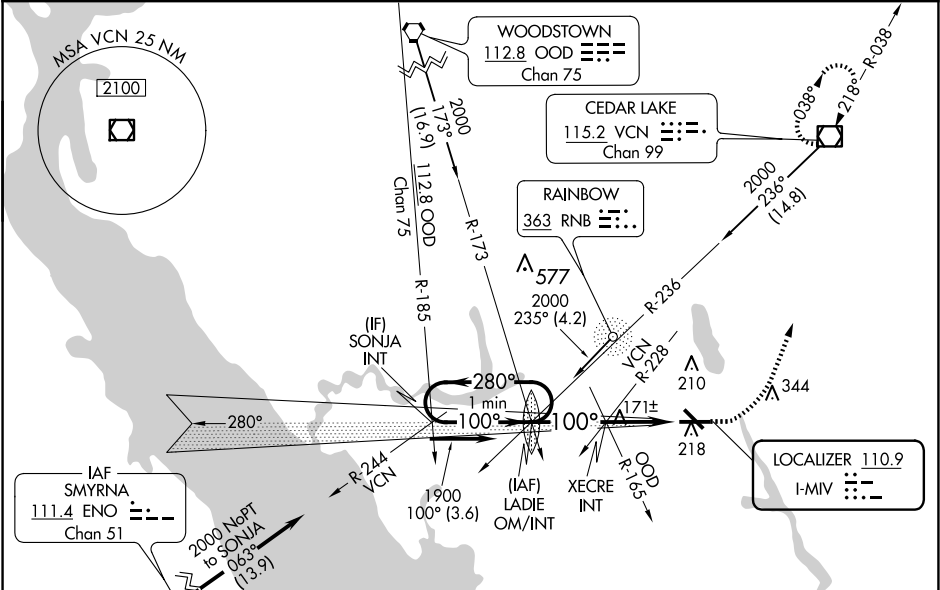
ILS or LOC RWY 10
MILLVILLE MUNI (MIV)

⚠ Inoperative table does not apply. Rwy 10 helicopter visibility reduction below ¾ SM NA. When local altimeter setting not received, use Atlantic City altimeter setting: increase DA to 407 feet; increase all MDAs 60 feet and visibility Cat B ¼ SM and Cats C and D ½ SM. Autopilot coupled approach NA below 300 MSL.

MALSR

MISSED APPROACH: Climb to 550 then climbing left turn to 2000 direct VCN VOR/DME and hold.

ASOS 119.6	ATLANTIC CITY APP CON 124.6 327.125	UNICOM 123.0 (CTAF)
----------------------	---	-------------------------------



One Minute Holding Pattern

LADIE OM/INT 1865

550 2000 VCN

2000 ← 280° 100° → 1900

GS 3.00° TCH 52

100° 980°

2.7 NM 2.7 NM

XECRE INT

CATEGORY	A	B	C	D
S-ILS 10	347-1 273 (300-1)			
S-LOC 10	980-1¼	906 (900-1¼)	980-2½	906 (900-2½)
CIRCLING	980-1¼	895 (900-1¼)	980-2¾ 895 (900-2¾)	980-3 895 (900-3)
XECRE FIX MINIMUMS (DUAL VOR RECEIVERS REQUIRED)				
S-LOC 10	440-1 366 (400-1)			
CIRCLING	520-1 435 (500-1)	580-1 495 (500-1)	660-1½ 575 (600-1½)	660-2 575 (600-2)

MIRL Rwy 10-28 and 14-32

FAF to MAP 5.4 NM

Knots	60	90	120	150	180
Min:Sec	5:24	3:36	2:42	2:10	1:48

NE-2, 10 JUL 2025 to 07 AUG 2025

NE-2, 10 JUL 2025 to 07 AUG 2025