


AL-890 (FAA)


TETERBORO (TEB)
TETERBORO, NEW JERSEY

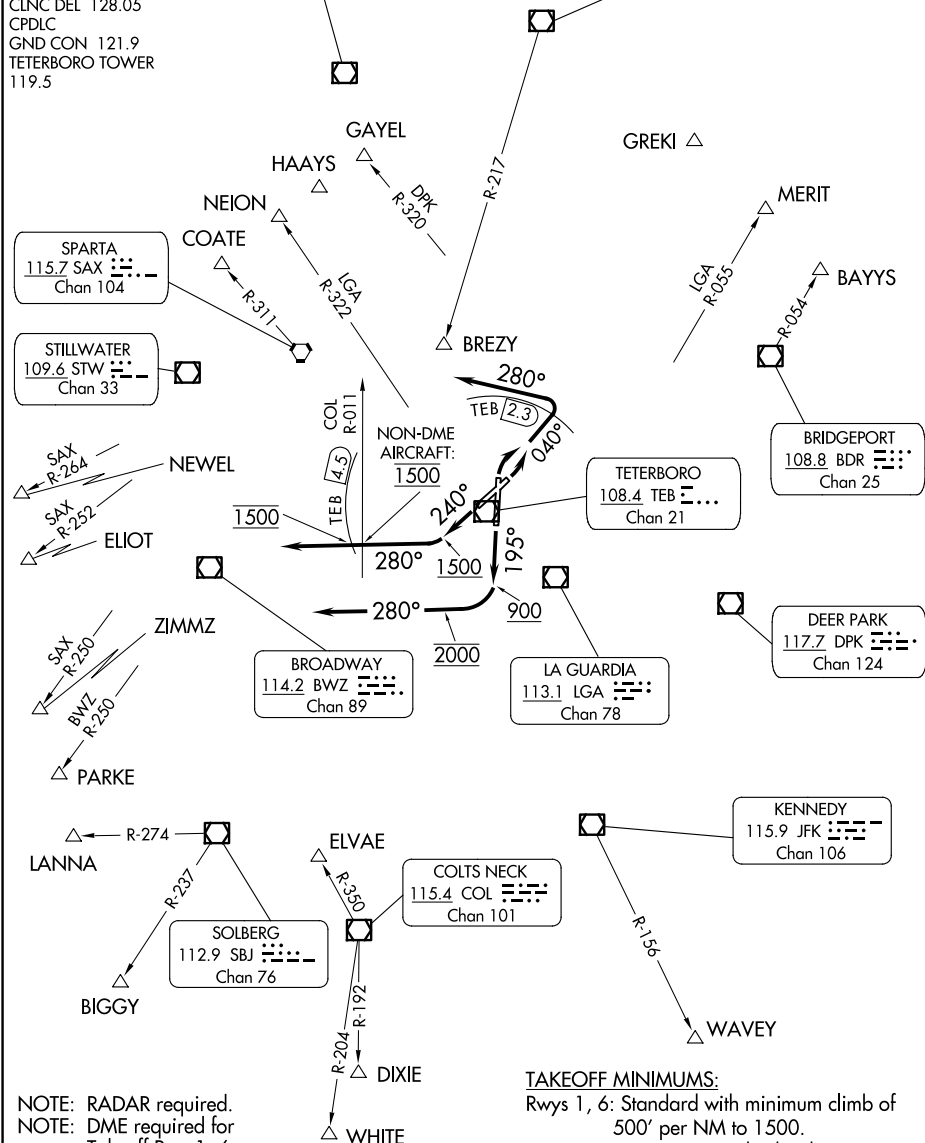
TETERBORO FOUR DEPARTURE

NEWARK DEP CON
119.2 126.7 379.9
D-ATIS
114.2 132.85
CLNC DEL 128.05
CPDLC
GND CON 121.9
TETERBORO TOWER
119.5

HUGUENOT
116.1 HUO 
Chan 108

TOP ALTITUDE:
2000

KINGSTON
117.6 IGN 
Chan 123



TAKEOFF MINIMUMS:

Rwys 1, 6: Standard with minimum climb of 500' per NM to 1500.

Rwy 19: 600-2¼ or Standard with minimum climb of 352' per NM to 700.

Rwy 24: 400-1¾ or Standard with minimum climb of 463' per NM to 1500.

Note: Chart not to scale.

TETERBORO FOUR DEPARTURE

(TEB4.TEB) 07OCT21

TETERBORO, NEW JERSEY
TETERBORO (TEB)

NE-2, 10 JUL 2025 to 07 AUG 2025