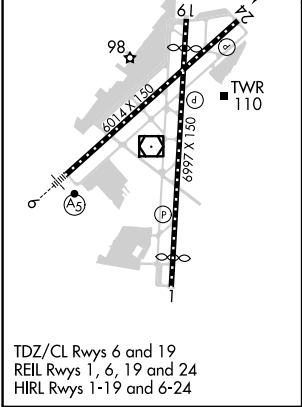
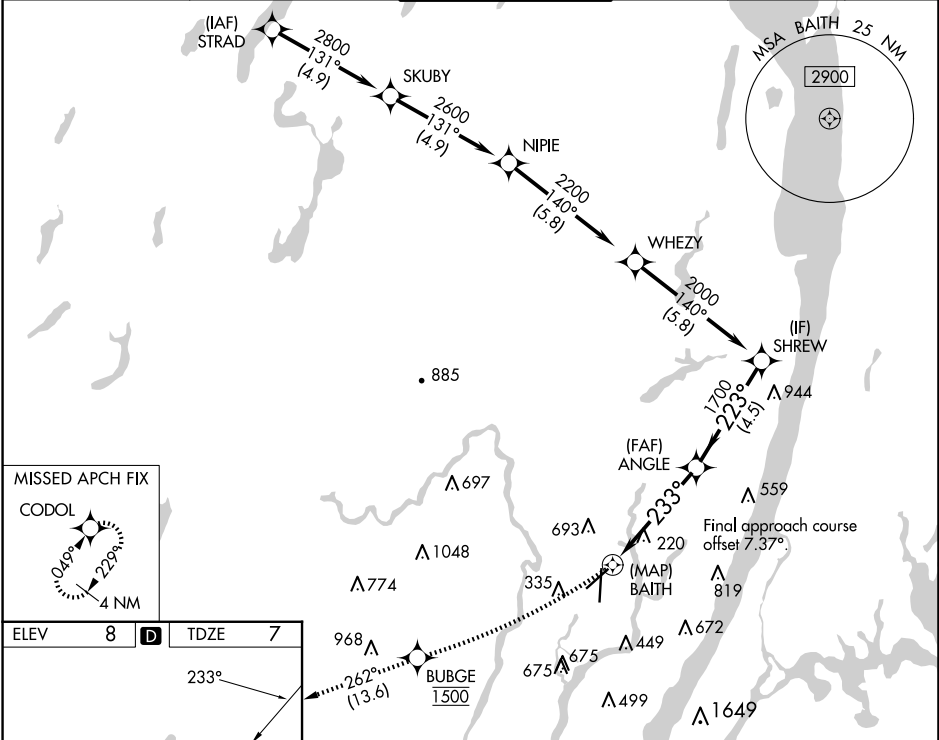


APP CRS	Rwy Idg	6014
233°	TDZE	7
	Apt Elev	8

RNAV (GPS) RWY 24

TETERBORO (TEB)

RNP APCH. RADAR required.			MISSED APPROACH: Climbing right turn direct BUBGE, cross BUBGE at 1500 then climb to 2000 on track 262° to CODOL and hold.		
<div><div></div><div></div></div> <div>Circling NA for Cats B, C, D northwest of Rwy 6-19. Rwy 24 helicopter visibility reduction below 1 NA.</div>					
D-ATIS	NEWARK APP CON	TETERBORO TOWER	GND CON	CLNC DEL	CPDLC
114.2 132.85	127.6 379.9	119.5	121.9	128.05	



<div><div>BUBGE 2000 tr 262°</div><div>CODOL</div></div>			
<div><div>ANGLE</div><div>BAITH</div><div>SHREW</div><div>2000</div><div>1700</div><div>223°</div><div>233°</div><div>≤ 3.20° TCH 46</div></div>			
<div><div>0.3</div><div>4.6 NM</div><div>4.5 NM</div></div>			
CATEGORY	A	B	C
LNAV MDA	580-1	573 (600-1)	580-1½ 573 (600-1½)
CIRCLING	760-1	752 (800-1)	820-2½ 812 (900-2½) 1040-3 1032 (1100-3)

NE-2, 10 JUL 2025 to 07 AUG 2025

NE-2, 10 JUL 2025 to 07 AUG 2025