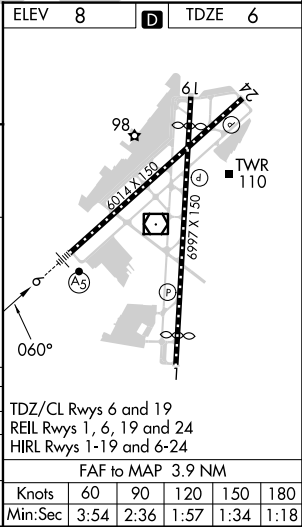
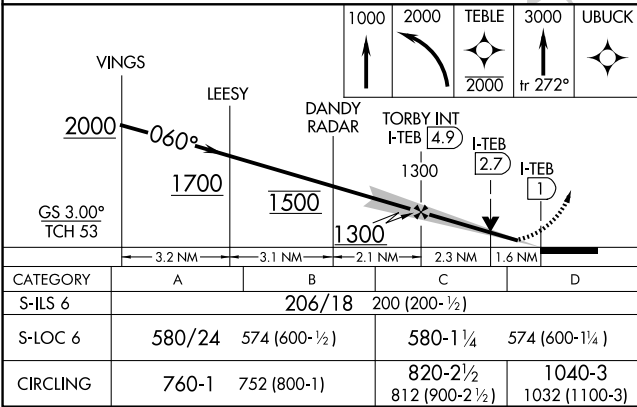
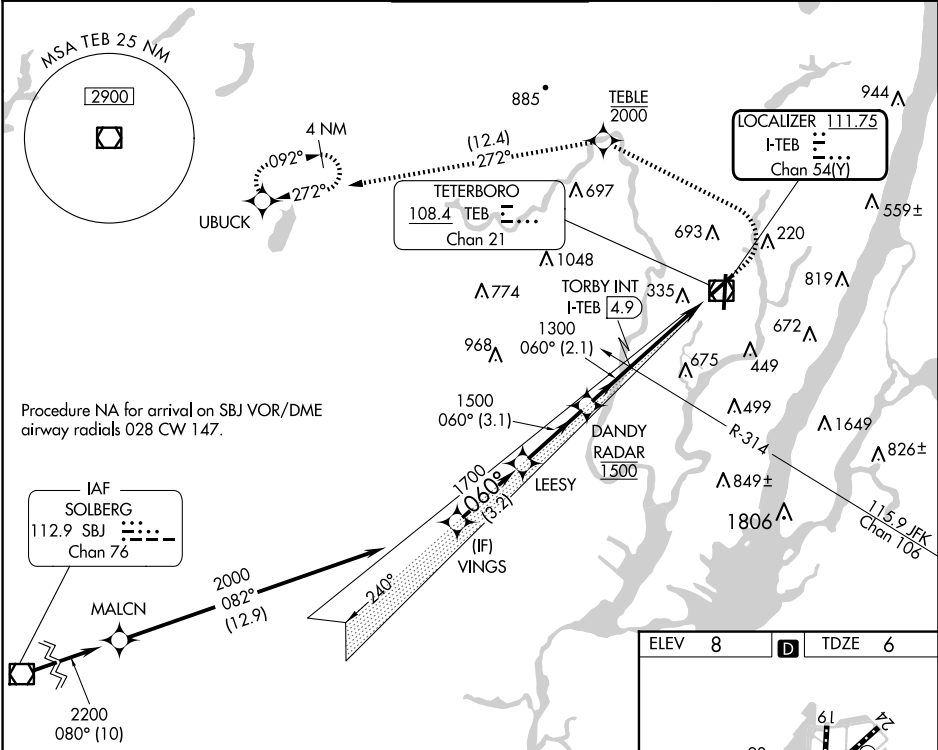


| | | | |
|---------------|---------|----------|------|
| LOC/DME I-TEB | APP CRS | Rwy Idg | 6014 |
| 111.75 | 060° | TDZE | 6 |
| Chan 54(Y) | | Apt Elev | 8 |

ILS Z or LOC Z RWY 6
TETERBORO (TEB)

| | | |
|--|-------|---|
| RNP APCH - GPS. | MALSR | MISSED APPROACH: Climb to 1000, then climbing left turn to 2000 direct TEBLE, cross TEBLE at or below 2000, then climb to 3000 on track 272° to UBUCK and hold. |
| RADAR required. | AS | |
| ⚠ Circling NA for Cats B, C and D northwest of Rwy 6 and 19. | | |

| | | | | | |
|--------------|----------------|-----------------|---------|----------|-------|
| D-ATIS | NEWARK APP CON | TETERBORO TOWER | GND CON | CLNC DEL | CPDLC |
| 114.2 132.85 | 127.6 379.9 | 119.5 | 121.9 | 128.05 | |



NE-2, 10 JUL 2025 to 07 AUG 2025

NE-2, 10 JUL 2025 to 07 AUG 2025