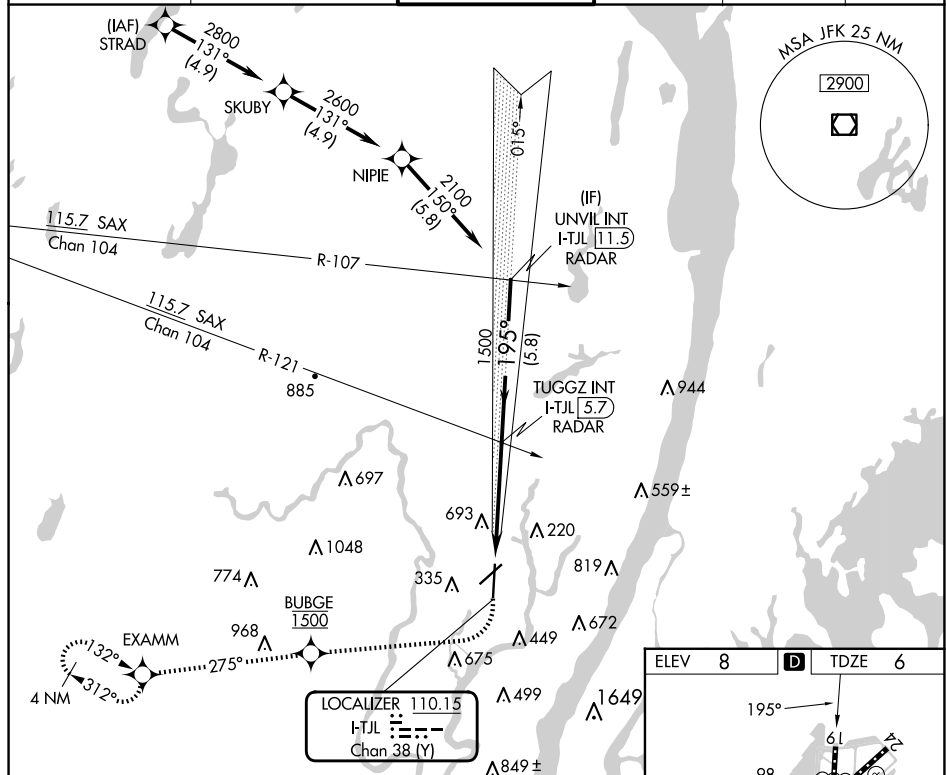


ILS or LOC RWY 19
TETERBORO (TEB)

MISSED APPROACH: Climb to 500 then climbing right turn direct BUBGE, cross BUBGE at 1500, then climb to 3000 on track 275° to EXAMM and hold, continue climb-in-hold to 3000.

D-ATIS 114.2 132.85	NEWARK APP CON 127.6 379.9	TETERBORO TOWER 119.5	GND CON 121.9	CLNC DEL 128.05	CPDLC
------------------------	-------------------------------	--------------------------	------------------	--------------------	-------



NE-2, 10 JUL 2025 to 07 AUG 2025

NE-2, 10 JUL 2025 to 07 AUG 2025