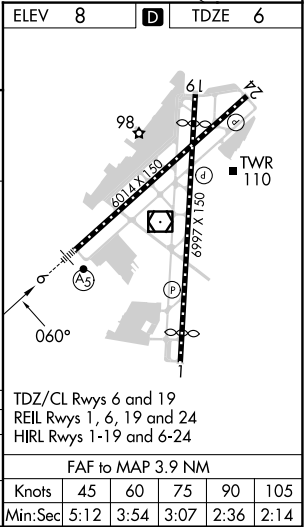
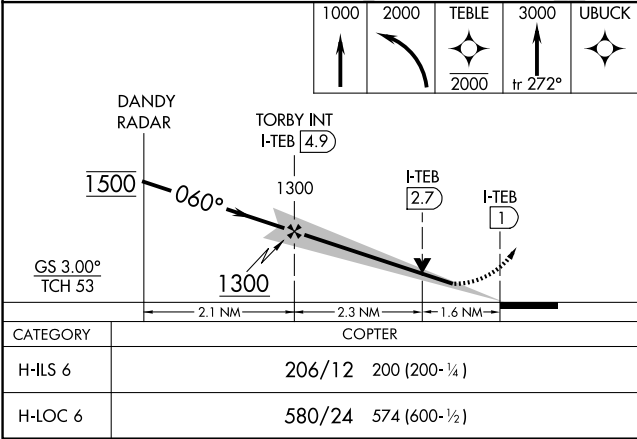
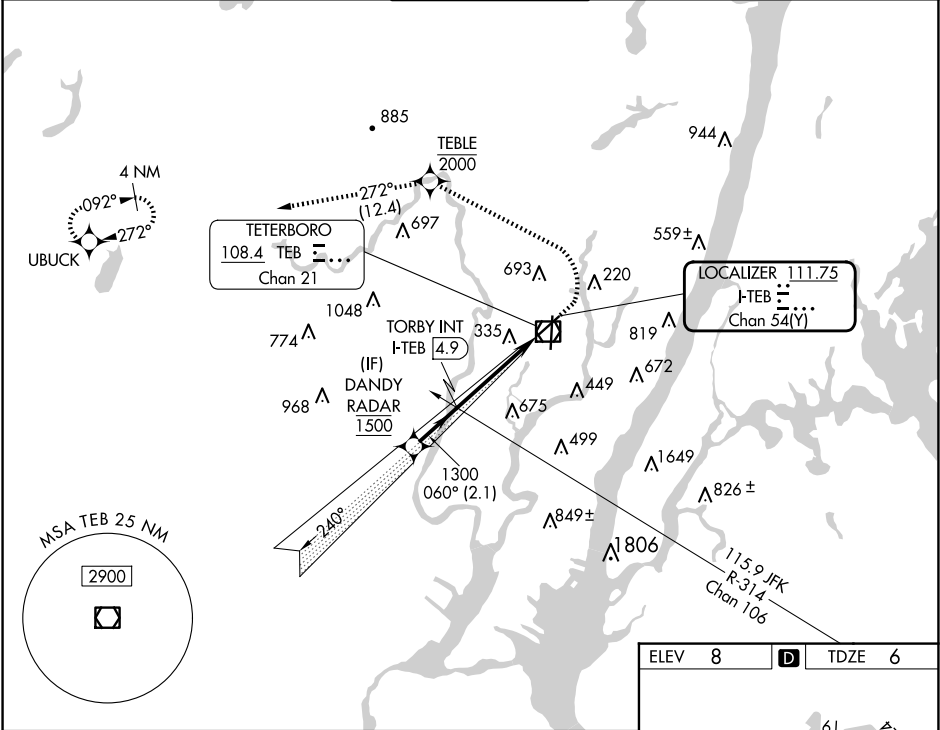


LOC/DME I-TEB 111.75 Chan 54 (Y)	APP CRS 060°	Rwy Idg 6014 TDZE 6 Apt Elev 8
--	------------------------	---

COPTER ILS Y or LOC Y RWY 6
TETERBORO (TEB)

RNP APCH - GPS. RADAR required. NA	MALS AS	MISSED APPROACH: Climb to 1000, then climbing left turn to 2000 direct TEBLE, cross TEBLE at or below 2000, then climb to 3000 on track 272° to UBUCK and hold.
--	------------	---

D-ATIS 114.2 132.85	NEWARK APP CON 127.6 379.9	TETERBORO TOWER 119.5	GND CON 121.9	CLNC DEL 128.05	CPDLC
-------------------------------	--------------------------------------	---------------------------------	-------------------------	---------------------------	-------



COPTER ILS Y or LOC Y RWY 6

NE-2, 10 JUL 2025 to 07 AUG 2025

NE-2, 10 JUL 2025 to 07 AUG 2025