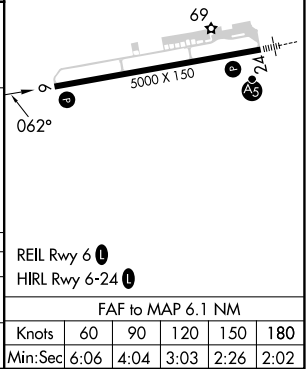
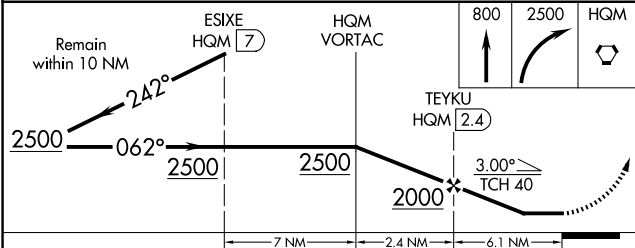
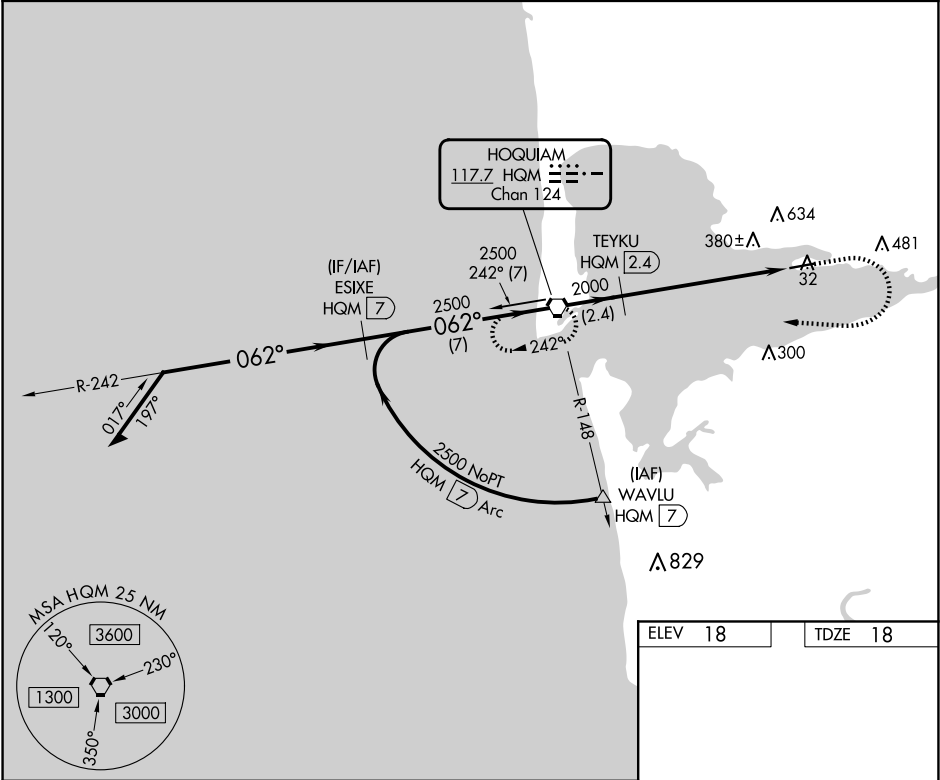


VORTAC HQM	APP CRS	Rwy Idg	5000
117.7	062°	TDZE	18
Chan 124		Apt Elev	18

VOR RWY 6  
BOWERMAN FLD (HQM)

DME required.	MISSED APPROACH: Climb to 800 then climbing right turn 2500 direct HQM VORTAC and hold, continue climb-in-hold to 2500.
<div><div></div><div></div></div> Circling NA northwest of Rwy 6-24. Rwy 6 helicopter visibility reduction below 1 SM NA. Straight-in Rwy 6 NA at night, Circling Rwy 6 NA at night.	

ASOS 135.775	SEATTLE CENTER 128.3 269.0	UNICOM 122.7 (CTAF) 0
-----------------	-------------------------------	--------------------------



NW-1, 10 JUL 2025 to 07 AUG 2025

NW-1, 10 JUL 2025 to 07 AUG 2025