

HOQUIAM, WASHINGTON

AL-889 (FAA)

24305

| | | |
|--|------------------------|---|
| WAAS CH 86902 W24A | APP CRS 241° | Rwy Idg 5000 TDZE 16 Apt Elev 18 |
|--|------------------------|---|

RNAV (GPS) RWY 24

BOWERMAN FLD (HQM)



For uncompensated Baro-VNAV systems, LNAV/VNAV NA below -6°C (22°F) or above 43°C (109°F). When local altimeter setting not received, procedure NA. Circling NA northwest of Rwy 6-24. DME/DME RNP-0.3 NA. For inoperative MALS, increase LPV Cat C visibility to 7/8 mile and LNAV Cat C visibility to 2 1/2 miles.

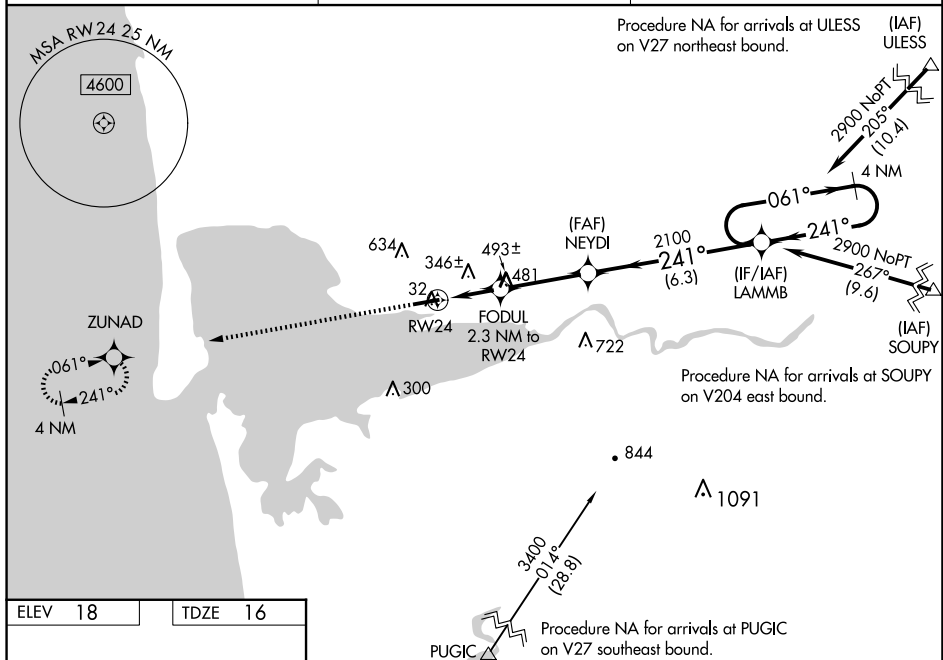
MALSR



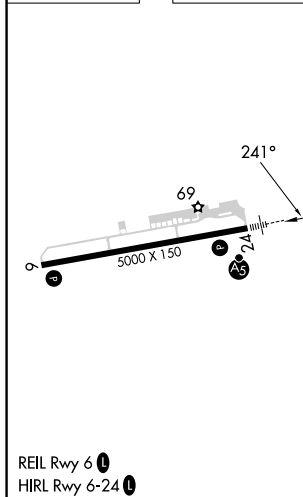
MISSED APPROACH:
Climb to 2600 direct
ZUNAD and hold.

ASOS
135.775

SEATTLE CENTER
128.3 269.0

UNICOM
122.7 (CTAF) 

| | | | | |
|------|----|--|------|----|
| ELEV | 18 | | TDZE | 16 |
|------|----|--|------|----|



* INAV Only.

ZUNAD

2600 ↑

4 NM Holding Pattern

LAMM B

FODUL 2.3 NM to RW24

NEYDI 2100

RW24

061° →

← 241°

2900

920*

2100

GP 3.50°
TCH 55

| CATEGORY | A | B | C | D |
|------------------|-------------------------|------------------------|------------------------|----|
| LPV DA | 226-½ | 210 (300-½) | 286-½ 270 (300-½) | NA |
| INAV/ VNAV DA | 676-1½ 660 (700-1½) | | | NA |
| INAV MDA | 800-½ 784 (800-½) | 800-¾ 784 (800-¾) | 800-1¾ 784 (800-1¾) | NA |
| CIRCLING | 800-1 782 (800-1) | 800-1¼ 782 (800-1¼) | 800-2¼ 782 (800-2¼) | NA |

HOQUIAM, WASHINGTON
Amdt 2E 07OCT21

46°58'N-123°56'W

BOWERMAN FLD (HQM)

RNAV (GPS) RWY 24

NW-1, 10 JUL 2025 to 07 AUG 2025

NW-1, 10 JUL 2025 to 07 AUG 2025