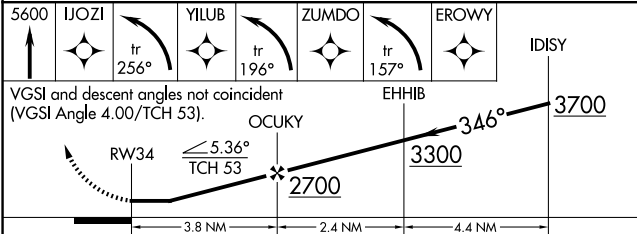
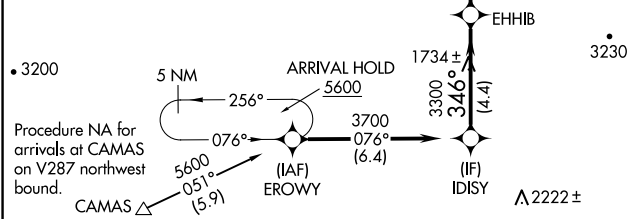
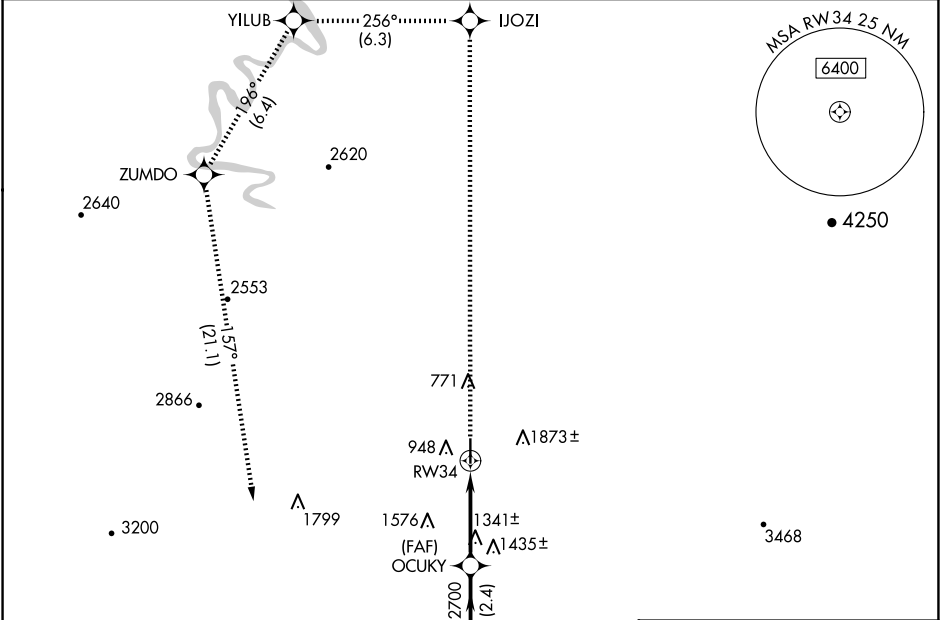


APP CRS	Rwy Idg	N/A
346°	TDZE	N/A
	Apt Elev	533

RNAV (GPS)-B
ROSEBURG RGNL (R.B.G)

RNP APCH - GPS.	MISSED APPROACH: Climb to 5600 direct IJOZI and left turn on track 256° to YILUB and left turn on track 196° to ZUMDO and left turn on track 157° to EROWY and hold.
<div><div></div><div></div><div>Circling NA east of Rwy 16-34. Procedure NA at night. Rwy 16, 34 helicopter visibility reduction below 1 SM NA.</div></div>	

ASOS 135.475	SEATTLE CENTER 127.55 239.0	UNICOM 122.8 (CTAF) 0
-----------------	--------------------------------	--------------------------



CATEGORY	A	B	C	D
CIRCLING	1700-1¼ 1167 (1200-1¼)	1700-1½ 1167 (1200-1½)	2020-3 1487 (1500-3)	2060-3 1527 (1600-3)

