

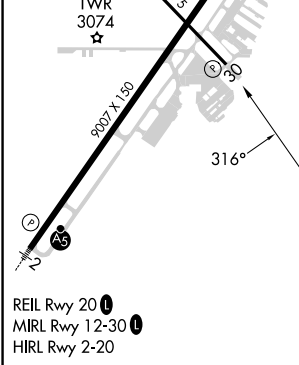
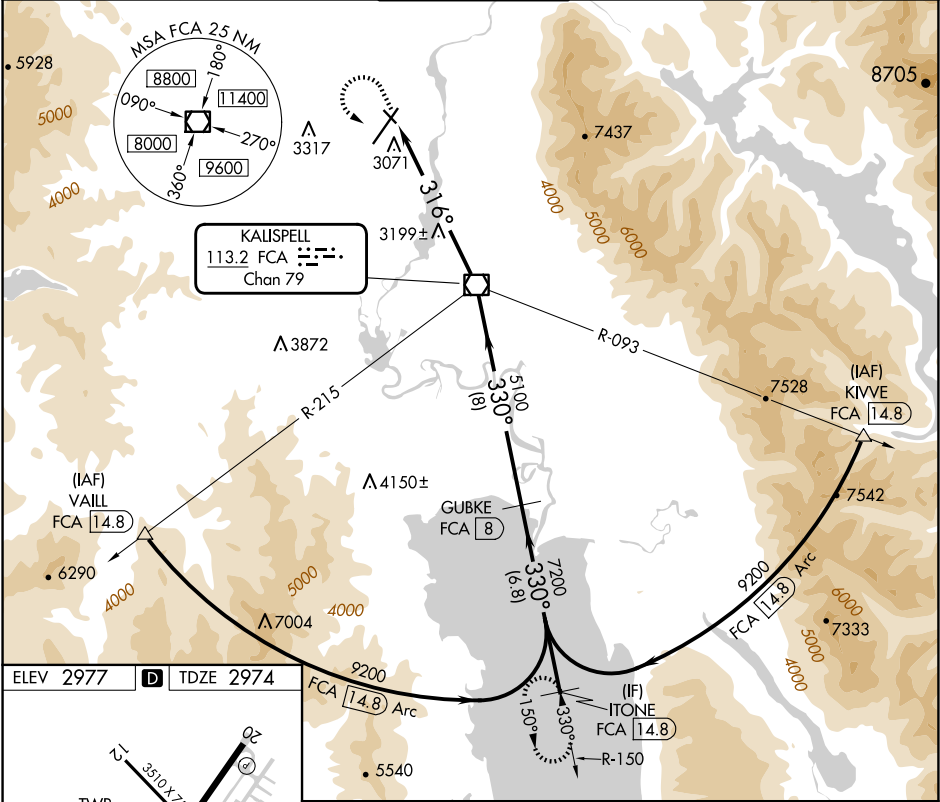
VOR/DME FCA	APP CRS	Rwy ldg TDZE	3510
113.2	316°	2974	
Chan 79		Apt Elev	2977

VOR/DME RWY 30

GLACIER PARK INTL (GPI)

<div><div><div></div><div></div></div><div><div>Rwy 30 helicopter visibility reduction below ¾ SM NA.</div></div></div> <div>MISSED APPROACH: Climb to 4000 then climbing left turn to 9300 via heading 130° and FCA VOR/DME R-150 to ITONE/14.8 DME and hold, continue climb-in-hold to 9300.</div>
--

ATIS 132.625	SALT LAKE CENTER 127.075 244.875	GLACIER TOWER★ 124.55 (CTAF) 0	GND CON 121.6	UNICOM 122.95
-----------------	-------------------------------------	-----------------------------------	------------------	------------------



<div><div><div></div><div></div></div><div><div>4000</div><div>9300</div></div><div><div>hdg</div><div>130°</div></div></div> <div><div>FCA</div><div>R-150</div></div> <div><div>ITONE</div><div>FCA 14.8</div></div> <div><div>Descent angles NA.</div></div> <div><div>ITONE</div><div>FCA 14.8</div></div>
--

<div><div><div></div><div></div></div><div><div>FCA</div><div>6.5</div></div><div><div>VOR/DME</div></div></div> <div><div>316°</div></div> <div><div>5100</div></div> <div><div>330°</div></div> <div><div>7200</div></div> <div><div>9200</div></div>
---

	6.5 NM	8 NM	6.8 NM	
CATEGORY	A	B	C	D
S-30	3480-1	506 (600-1)	3480-1½	506 (600-1½)
CIRCLING	3520-1 543 (600-1)	3580-1 603 (700-1)	3680-2 703 (800-2)	3760-2½ 783 (800-2½)