

RNAV (GPS) Z RWY 2
GLACIER PARK INTL (GPI)

MALSR

MISSED APPROACH: (Do not exceed 185K until CUBTO) Climb to 4200 then climbing left turn 9200 direct MAGDN and on track 299° to CUBTO and hold, continue climb-in-hold to 9200.

MISSED APCH FIX

CUBTO

119°

7 NM

299°

299°

113.4°

MAGDN

(not to scale)

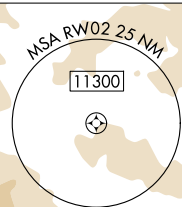
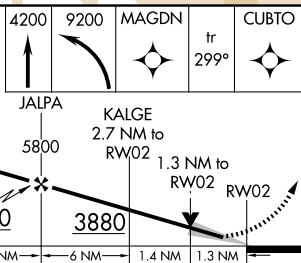



Diagram illustrating Procedure NA for arrivals at OLIBY on V448 westbound. The path starts at (IAF) OLIBY, proceeds through a zigzag line, and then follows a straight line towards the right. Key points on the path are labeled: 9000 NoPT, 080° (23.1), and 4000.



CATEGORY		A	B	C	D
LPV	DA	3166-1/2 200 (200-1/2)			
LNAV/ VNAV	DA	3468-1 502 (500-1)			
LNAV	MDA	3440-1/2	474 (500-1/2)	3440-1	474 (500-1)
 CIRCLING		3480-1 503 (600-1)	3580-1 603 (700-1)	3680-2 703 (800-2)	3760-2 1/2 783 (800-2 1/2)

