

APP CRS	Rwy Idg	9007
020°	TDZE	2966
	Apt Elev	2977

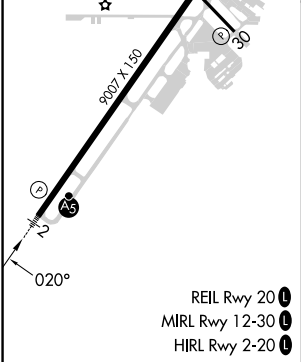
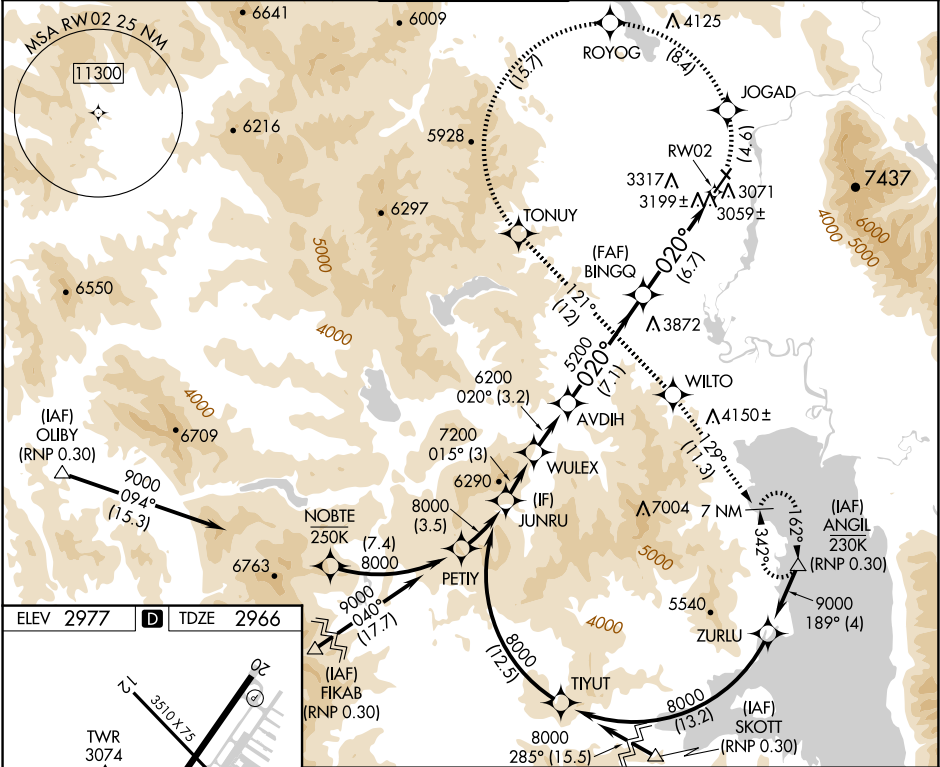
RNAV (RNP) Y RWY 2
GLACIER PARK INTL (GPI)

RF and GPS required. Missed approach requires RNP less than 1.0.
For uncompensated Baro-VNAV systems, procedure NA below -21°C (-5°F) or above 43°C (109°F). For inoperative MALSR increase RNP 0.10* visibility to 1¼ and RNP 0.30 visibility to 2.
*Missed approach requires minimum climb of 220 feet per NM to 6100.

MALSR
A5

MISSED APPROACH: Climb to 10000 via left turn to JOGAD, and via left turn to TONUY, and via 121° track to WILTO and via 129° track to ANGL and hold.

ATIS 132.625	SALT LAKE CENTER 127.075 244.875	GLACIER TOWER ★ 124.55 (CTAF) 0	GND CON 121.6	UNICOM 122.95
-----------------	-------------------------------------	------------------------------------	------------------	------------------



Procedure	Turn	NA	JUNRU	WULEX	AVDIH	10000	JOGAD	ROYOG
GP 3.00°	TCH 51	8000	015° (3)	020°	5200	5200	RW02	
		3 NM	3.2 NM	7.1 NM	6.7 NM			
CATEGORY	A	B	C	D				
RNP 0.10 DA*	NA	3340-¾	374 (400-¾)					
RNP 0.30 DA	NA	3522-1½	556 (600-1½)					

AUTHORIZATION REQUIRED

NW-1, 10 JUL 2025 to 07 AUG 2025

NW-1, 10 JUL 2025 to 07 AUG 2025