

APP CRS	Rwy Idg	3510
301°	TDZE	2974
	Apt Elev	2977

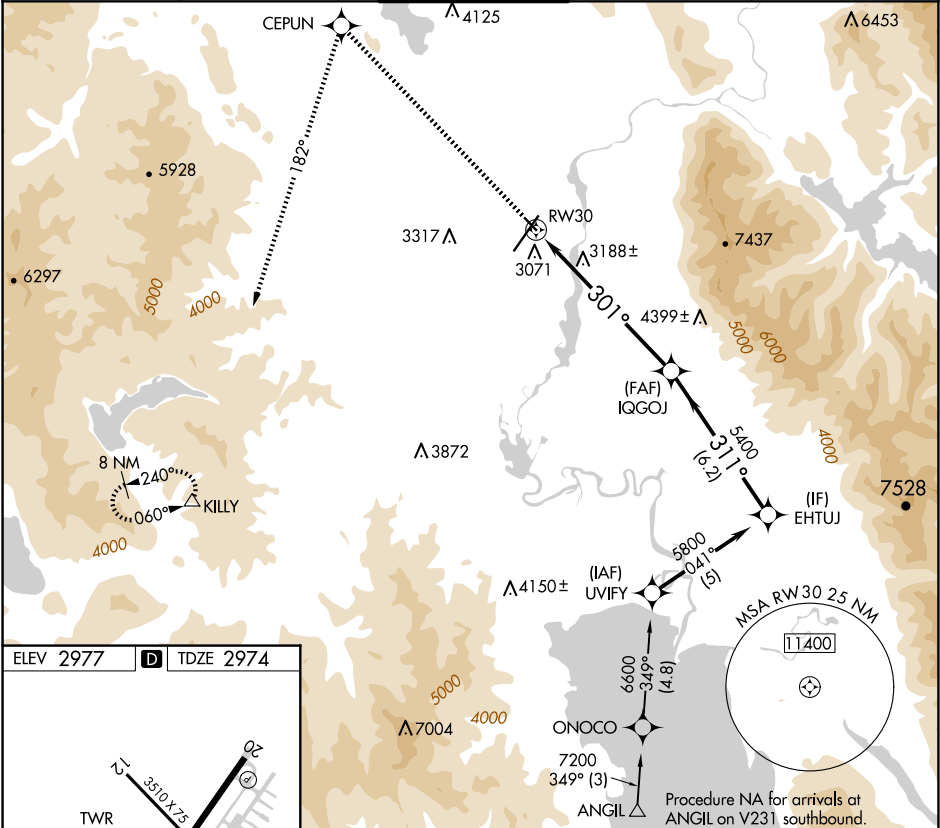
RNAV (GPS) RWY 30

GLACIER PARK INTL (GPI)

RNP APCH - GPS.	
<div><div></div><div></div><div></div></div>	Rwy 30 helicopter visibility reduction below ¾ SM NA.
-1.5°C	

MISSED APPROACH: Climb to 12000 direct CEPUN and left turn 182° to KILLY and hold, continue climb-in-hold to 12000.

ATIS	SALT LAKE CENTER	GLACIER TOWER★	GND CON	UNICOM
132.625	127.075 244.875	124.55 (CTAF) 0	121.6	122.95



12000		CEPUN	182° tr	KILLY	VGS and descent angles not coincident (VGS Angle 3.50/TCH 26).		EHTUJ
					IQGOJ		5800
					RW30		5400
					3.21° TCH 45		Procedure Turn NA
					7 NM		6.2 NM
CATEGORY		A		B		C	
LNAV MDA		3500-1		526 (600-1)		3500-1½ 526 (600-1½)	
CIRCLING		3520-1		3580-1		3680-2	
		543 (600-1)		603 (700-1)		703 (800-2)	
						3760-2½	
						783 (800-2½)	