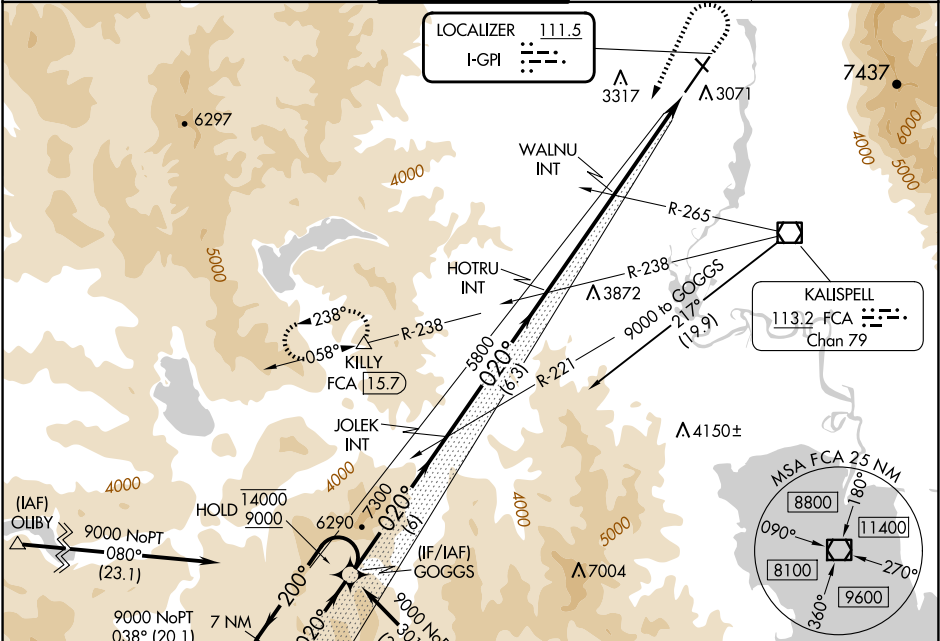


LOC I-GPI 111.5	APP CRS 020°	Rwy Idg TDZE Apt Elev 9007 2966 2977
---------------------------	------------------------	--

ILS or LOC RWY 2
GLACIER PARK INTL (GPI)

DME required. RNAV 1-GPS or RADAR required for procedure entry.		MALSR	MISSED APPROACH: Climb to 4100 then climbing left turn to 12000 on heading 190° and FCA VOR/DME R-238 to KILLY/15.7 DME and hold, continue climb-in-hold to 12000.	
Inop table does not apply to S-LOC 2 Cats C/D.				
ATIS 132.625	SALT LAKE CENTER 127.075 244.875	GLACIER TOWER★ 124.55 (CTAF)	GND CON 121.6	UNICOM 122.95



7 NM Holding Pattern		GOGGS		JOLEK INT		HOTRU INT		WALNU INT		KILLY		
14000 ← 200°		9000 → 020°		020°		020°		020°		020°		
GS 3.00°		TCH 51		5800		5800		5800		5800		
6 NM		6.3 NM		4.3 NM		4.5 NM						
CATEGORY	A		B		C		D					
S-ILS 2			3166-1/2		200 (200-1/2)							
S-LOC 2	4440-3/4		4440-1		4440-3		1474 (1500-3)					
	1474 (1500-3/4)		1474 (1500-1)									
CIRCLING	4440-1 1/4		4440-1 1/2		4440-3		1463 (1500-3)					
	1463 (1500-1 1/4)		1463 (1500-1 1/2)									
WALNU FIX MINIMUMS (DUAL VOR RECEIVERS REQUIRED)												
S-LOC 2	3520-1/2		554 (600-1/2)		3520-1 1/8		554 (600-1 1/8)					
CIRCLING	3520-1		3580-1		3680-2		3760-2 1/2					
	543 (600-1)		603 (700-1)		703 (800-2)		783 (800-2 1/2)					

