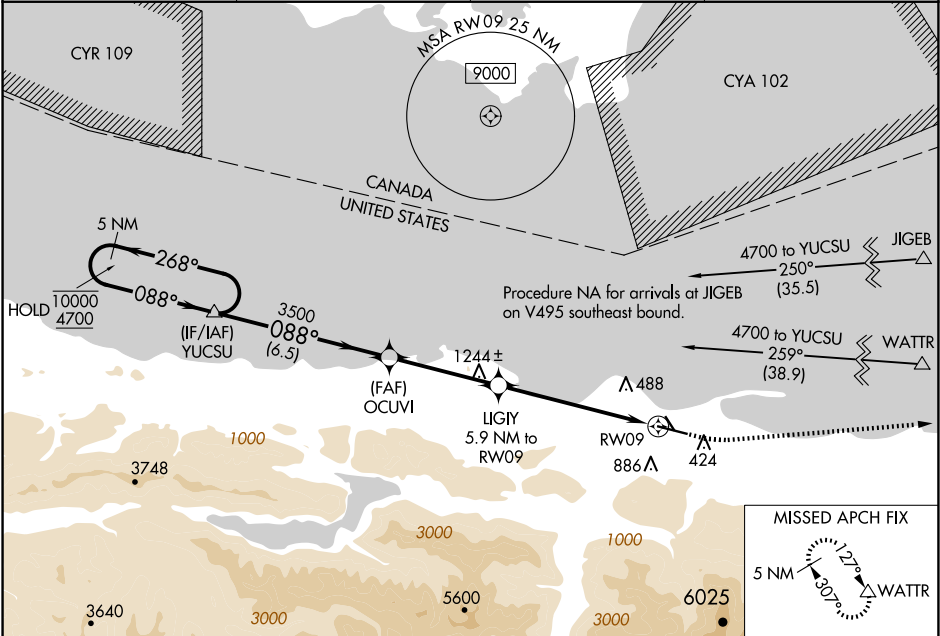


WAAS CH <b>77703</b> <b>W09A</b>	APP CRS <b>088°</b>	Rwy ldg <b>6347</b> TDZE <b>285</b> Apt Elev <b>291</b>
--	------------------------	---

RNAV (GPS) RWY 9  
WILLIAM R FAIRCHILD INTL (CLM)

RNP APCH - GPS.	MALSR 	MISSED APPROACH: Climb to 1000 then climbing left turn to 5400 direct WATTR and hold, continue climb-in-hold to 5400.
 Circling Rwy 13, 31 NA at night. Baro-VNAV NA. For inop ALS, increase LNAV/VNAV all Cats visibility to 1½ SM and LNAV Cat C/D visibility to 1½ SM. Circling NA south of Rwy 9-27.		

ASOS <b>135.175</b>	WHIDBEY APP CON <b>118.2 285.65</b>	CLNC DEL <b>124.15</b>	UNICOM <b>122.975 (CTAF)</b>
------------------------	--	---------------------------	---------------------------------



3520

ELEV 291

TDZE 285

5 NM Holding Pattern

YUCSU

OCUVI

LIGY

5.9 NM to RW09

2.1 NM to RW09

RW09

1000

5400

WATPR

10000

4700

268°

088°

088°

3500

2200

GP 3.00°

TCH 54

6.5 NM

4 NM

3.8 NM

2.1

088°

3235 X 150

6347 X 150

AS

088°

3235 X 150

6347 X 150

AS

CATEGORY	A	B	C	D
LPV DA	505-½ 220 (300-½)			
LNAV/VNAV DA	757-1⅛ 472 (500-1⅛)			
LNAV MDA	960-½ 675 (700-½)		960-1½ 675 (700-1½)	
CIRCLING	960-1 669 (700-1)		960-1⅞ 669 (700-1⅞)	1000-2¼ 709 (800-2¼)

MIRL Rwy 9-27

REIL Rwy 27