

ILS or LOC RWY 9
WILLIAM R FAIRCHILD INTL (CLM)

DME required.

MALSR

MISSED APPROACH: Climb to 1000 then climbing left turn to 5400 on heading 030° and CVV VOR/DME R-247 to JIGEB/CVV 12.1 DME and hold, continue climb-in-hold to 5400.

T
A Circling NA south of Rwy 9-27. Circling Rwy 13, 31 NA at night. For inop ALS, increase S-ILS 9 visibility to $\frac{7}{8}$ SM.

ASOS 135,175	WHIDBEY APP CON 118.2 285.65	CLNC DEL 124.15	UNICOM 122,975 (CTAF) 0
------------------------	--	---------------------------	-----------------------------------

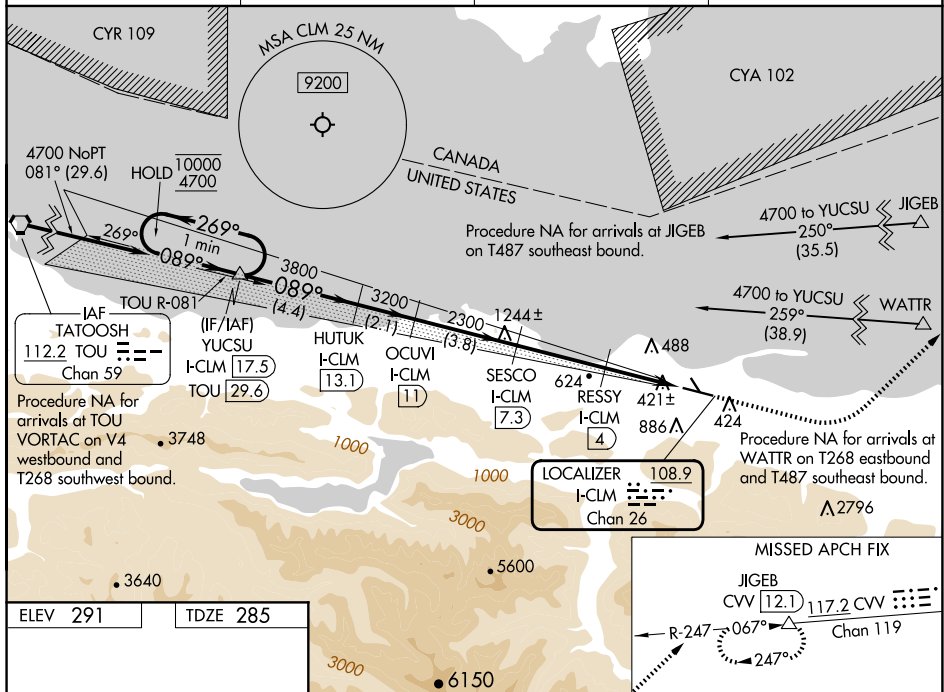


Figure 1-1: Example of a 4-segment RNAV (RNP) approach chart. The chart shows a 4-segment RNAV (RNP) approach for MIRL Rwy 9-27. The approach is a One Minute Holding Pattern with a GS 3.00° and TCH 54. The segments are defined by distance to go (10000, 4700, 3800, 3200, 2300, 1260) and distance to fix (4.4 NM, 2.1 NM, 3.8 NM, 3.3 NM, 1.7, 1.2). The chart includes various navigation aids (YUCSU, HUTUK, OCUVI, SESCO, RESSY, JIGEB) and their respective I-CLM values. The chart also shows the FAF to MAP 6.2 NM and the CIRCLING area.

NW-1, 10 JUL 2025 to 07 AUG 2025

NW-1, 10 JUL 2025 to 07 AUG 2025