

VORTAC TWF <u>113.1</u> Chan 78	APP CRS 078°	Rwy Ldg 8704 TDZE 4149 Apt Elev 4154
---	------------------------	---

VOR/DME RWY 8

JOSLIN FLD/MAGIC VALLEY RGNL (TWF)

T Circling to Rwy 30 NA at night. VDP NA with Jerome altimeter setting.
A When local altimeter setting not received, use Jerome altimeter setting and increase all MDA 60 feet and S-8 Cats C and D visibility ¼ mile and Circling Cat C visibility ¼ mile.

MISSED APPROACH: Climbing left turn to 6000 on heading 245° and TWF R-314 to WALIL/TWF 11 DME and hold

ASOS 135.025	TWIN FALLS APP CON★ 126.7 353.75	TWIN FALLS TOWER★ 118.2 (CTAF) 0 317.5	GND CON 121.7	CLNC DEL 123.65	UNICOM 122.95
------------------------	--	--	-------------------------	---------------------------	-------------------------

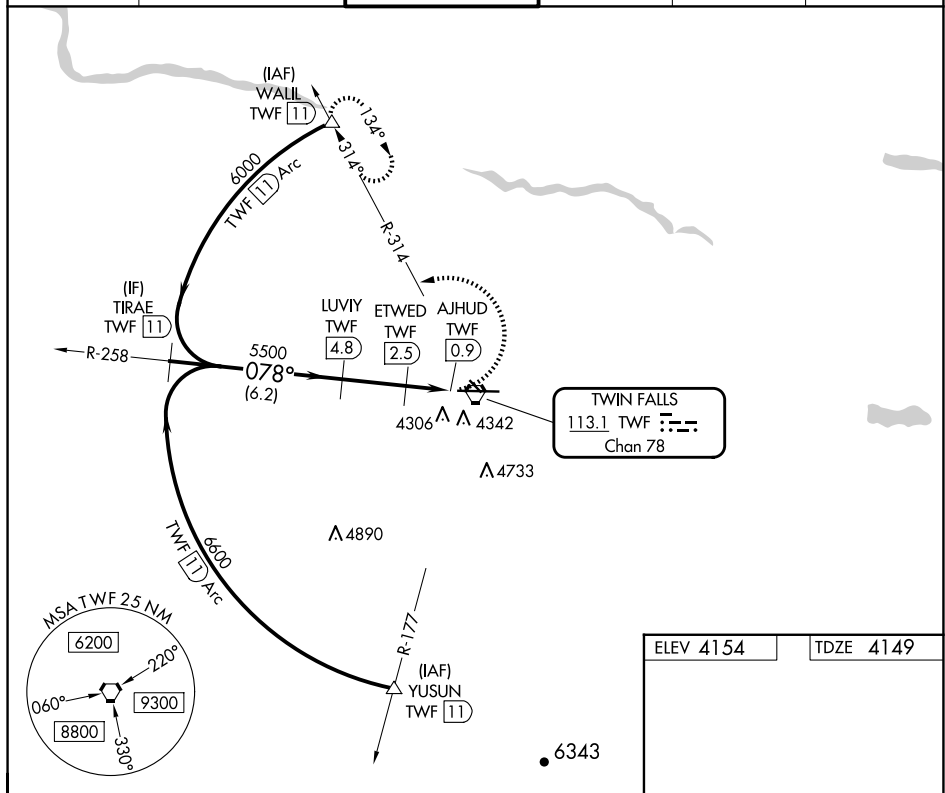


Diagram illustrating a step climb procedure for a 6000-foot initial climb. The climb starts at 6000 feet, descends at 078 degrees to 5500 feet (6.2 NM), then descends at 2.93 degrees to 4760 feet (2.3 NM). The final climb is to 6000 feet (0.8 NM). The diagram includes various TWR and TCH angles, and a table of climb rates for different categories.

CATEGORY	A	B	C	D
S-8	4560-1	411 (500-1)	4560-1½	411 (500-1½)
CIRCLING	4700-1 546 (600-1)	4780-1 626 (700-1)	5100-2¾ 946 (1000-2¾)	5100-3 946 (1000-3)

