

WAAS CH 77913 W32A	APP CRS 321°	Rwy Idg 7975 TDZE 222 Apt Elev 258
--	------------------------	---

RNAV (GPS) RWY 32
SHREVEPORT RGNL (SHV)

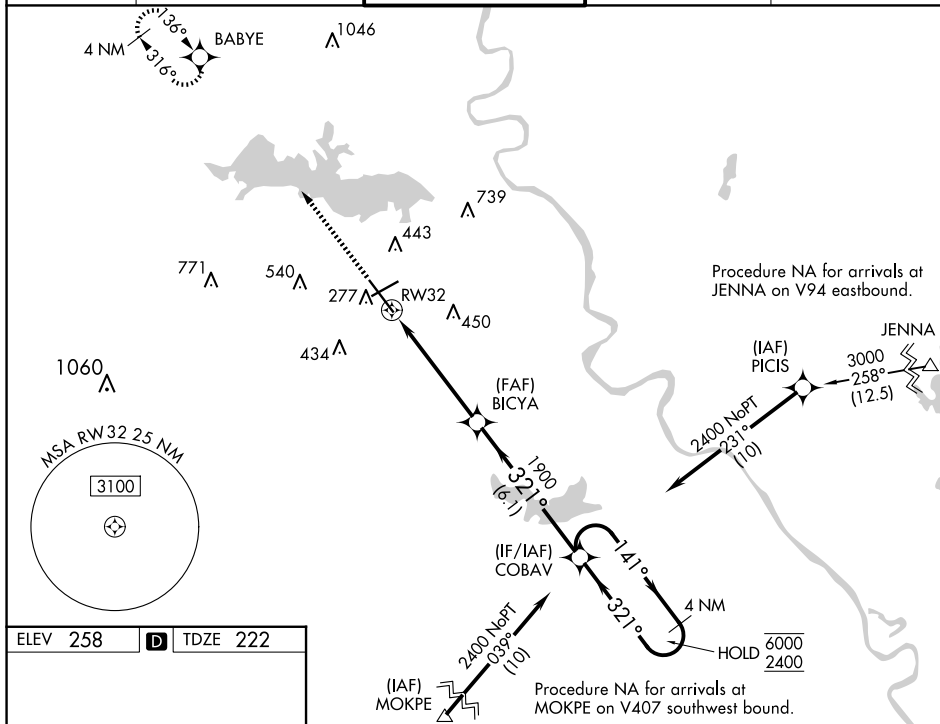
RNP APCH

T Rwy 32 helicopter visibility reduction below RVR 4000 NA. Inop table does not apply to LPV all Cats. For uncompensated Baro-VNAV systems, LNAV/VNAV NA below -6°C or above 54°C. For inop ALS, increase LNAV/VNAV all Cats visibility to RVR 6000 and LNAV Cat A and B visibility to RVR 5500.

MALSR

MISSED APPROACH:
Climb to 2600 direct
BABYE and hold.

ATIS 128.45	SHREVEPORT APP CON 119.9 335.55	SHREVEPORT TOWER 121.4 236.775	GND CON 121.175 236.775	CLNC DEL 124.65
-----------------------	---	--	-----------------------------------	---------------------------



ELEV 258	D	TDZE 222
----------	----------	----------

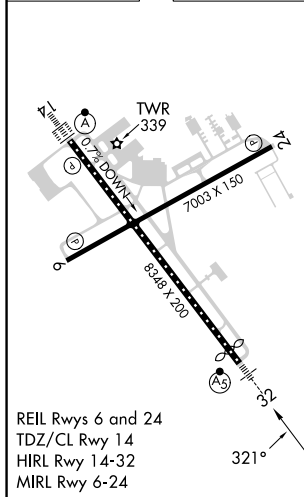


Diagram illustrating the 4 NM Holding Pattern for RW32. The pattern is defined by a 1.3 NM radius, a 3.8 NM radius, and a 6.1 NM radius. The holding pattern is 4 NM long. The diagram also shows the 2600 and 2400 altitudes, the 1900 altitude, and the 1900 heading. The diagram is labeled 'COBAV' and 'Holding Pattern'.