

LOC I-FOG 110.3	APP CRS 321°	Rwy Idg TDZE Apt Elev	7975 222 258
---------------------------	------------------------	-----------------------------	---

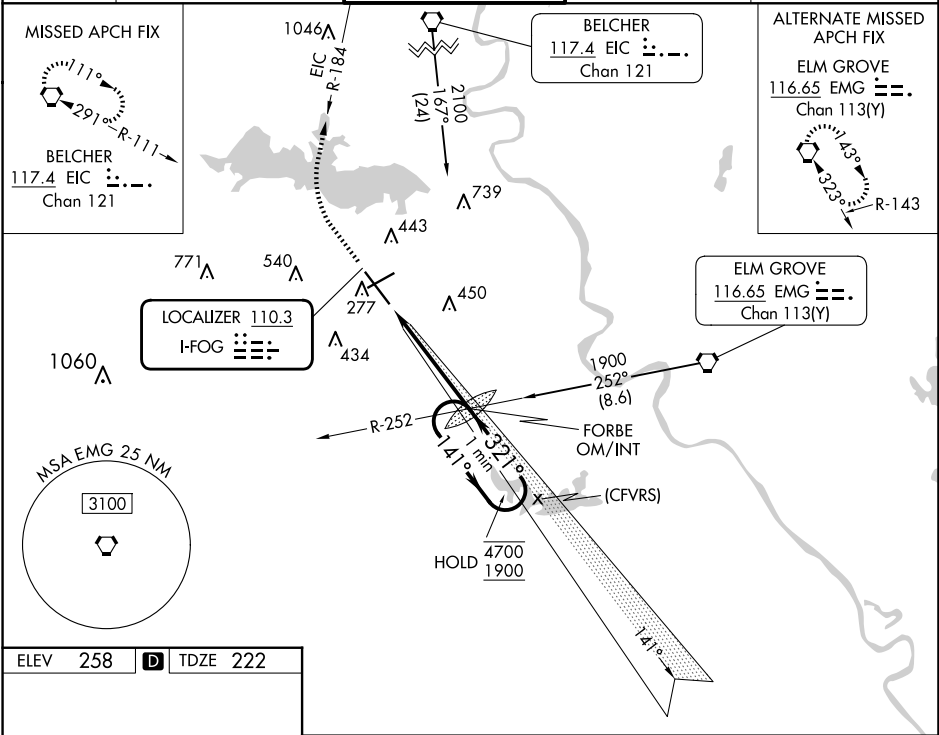
ILS or LOC RWY 32
SHREVEPORT RGNL (SHV)

⚠ Rwy 32 helicopter visibility reduction below RVR 4000 NA.
Inop table does not apply to S-ILS 32 all Cats.
For inop ALS, increase S-LOC 32 Cat A and B
visibility to RVR 5500 and Cat C and D visibility to 1 $\frac{3}{4}$ SM.

MALSR
(AS)

MISSED APPROACH: Climb to 800 then
climbing right turn to 3100 on EIC VORTAC
R-184 to EIC VORTAC and hold.

ATIS 128.45	SHREVEPORT APP CON 119.9 335.55	SHREVEPORT TOWER 121.4 236.775	GND CON 121.175 236.775	CLNC DEL 124.65
-----------------------	---	--	-----------------------------------	---------------------------




ELEV 258	D	TDZE 222
----------	----------	----------

REIL Rwy 6 and 24
HIRL Rwy 14-32
MIRL Rwy 6-24
TDZ/CL Rwy 14

FAF to MAP 4.8 NM

Knots	60	90	120	150	180
Min:Sec	4:48	3:12	2:24	1:55	1:36

800 ↑	3100 ↗	EIC R-184	EIC ⬡	
<div><div>FORBE OM/INT 1817</div><div>One Minute Holding Pattern</div><div><div>141° → 4700 ← 321° 1900</div><div>GS 3.00° TCH 52</div></div></div> <div><div>4.8 NM</div></div>				
CATEGORY	A	B	C	D
S-ILS 32	422/40 200 (200-¾)			
S-LOC 32	720/40	498 (500-¾)	720/50	498 (500-1)
 CIRCLING	760-1	502 (600-1)	980-2 722 (800-2)	1100-2¾ 842 (900-2¾)

SC-4, 10 JUL 2025 to 07 AUG 2025

SC-4, 10 JUL 2025 to 07 AUG 2025