

NDB

MOG

404

APP CRS

356°

Rwy Idg

TDZE

N/A

Apt Elev

2651

NDB or GPS-A

SISKIYOU COUNTY (SIY)

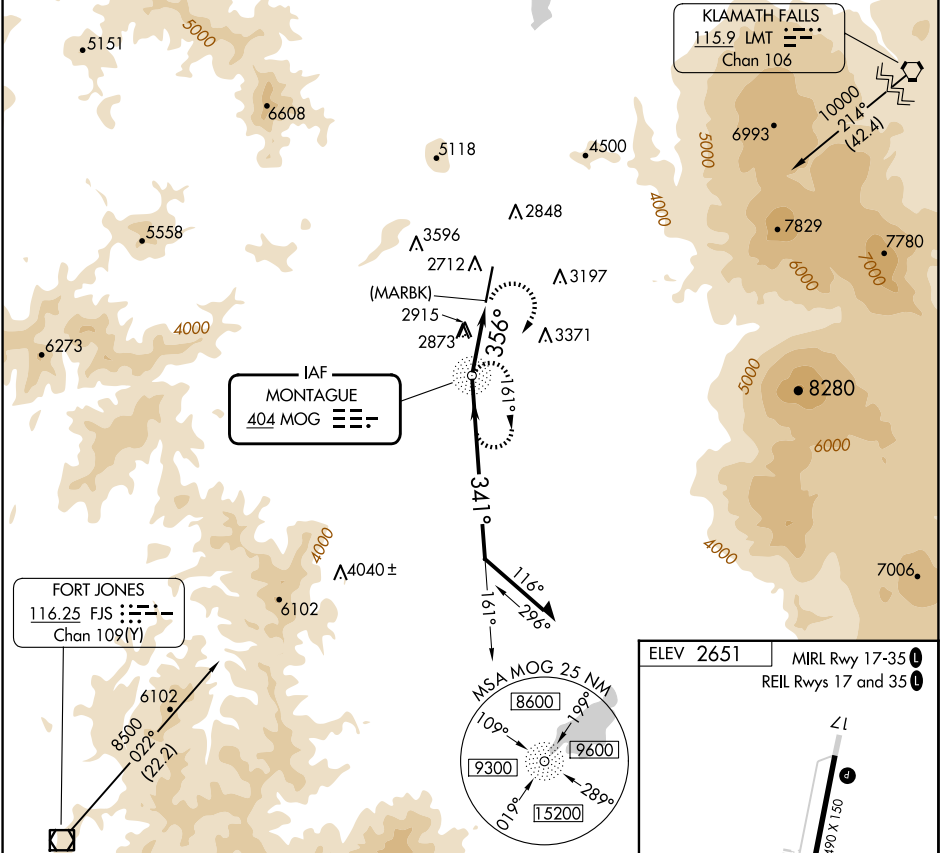
▼

NA

Use Siskiyou County alimeter setting; when not available, use Montague-Yreka Rohrer Fld alimeter setting; when neither received, procedure not authorized. Circling NA for Cats C and D west of Rwy 17-35.

MISSED APPROACH: Climbing right turn to 6800 direct MOG NDB and hold.

|                 |                                |                          |
|-----------------|--------------------------------|--------------------------|
| ASOS<br>121.125 | SEATTLE CENTER<br>124.85 306.3 | UNICOM<br>123.0 (CTAF) 0 |
|-----------------|--------------------------------|--------------------------|



Remain within 10 NM

MOG NDB

6800

161°

341°

4800

356°

(MARBK)

2.7 NM

6800

MOG

ELEV 2651

MIRL Rwy 17-35

REIL Rws 17 and 35

2691

7490 x 150

0.3% Up

35

356°

| CATEGORY | A                         | B                         | C                       | D                       | FAF to MAP 2.7 NM |      |      |      |      |      |
|----------|---------------------------|---------------------------|-------------------------|-------------------------|-------------------|------|------|------|------|------|
| CIRCLING | 3760-1¼<br>1109 (1200-1¼) | 3760-1½<br>1109 (1200-1½) | 3980-3<br>1329 (1400-3) | 4220-3<br>1569 (1600-3) | Knots             | 60   | 90   | 120  | 150  | 180  |
|          |                           |                           |                         |                         | Min:Sec           | 2:42 | 1:48 | 1:21 | 1:05 | 0:54 |