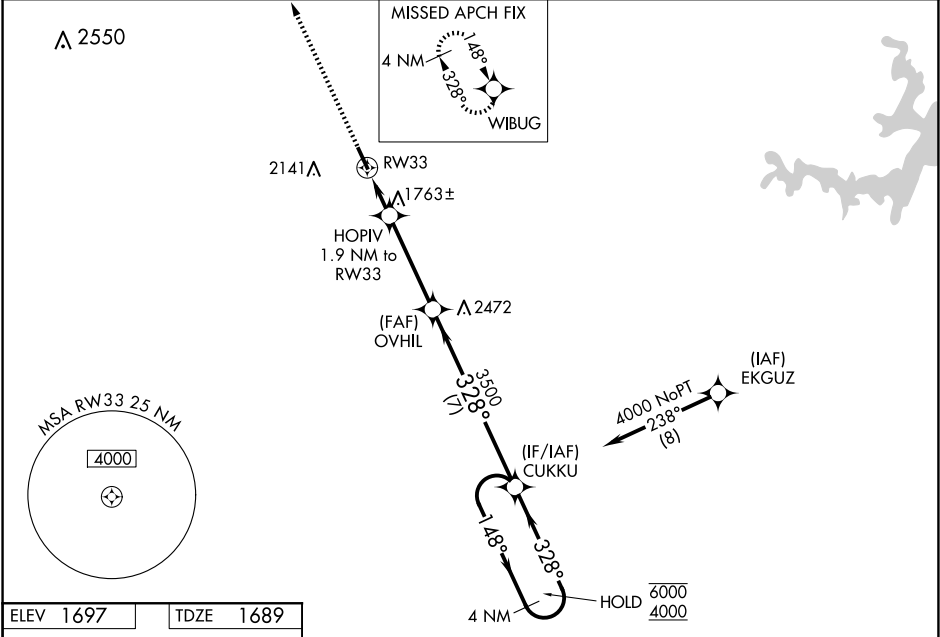


WAAS CH 82034 W33A	APP CRS 328°	Rwy Idg TDZE 1689 Apt Elev 1697	4506
--	------------------------	---	-------------

RNAV (GPS) RWY 33
COLEMAN MUNI (COM)

RNP APCH. ▼ Rwy 33 helicopter visibility reduction below ¾ SM NA. ▲ For uncompensated Baro-VNAV systems, LNAV/VNAV NA below -18°C or above 54°C.	MISSED APPROACH: Climb to 4000 direct WIBUG and hold.
--	---

AWOS-3PT 119.1	FORT WORTH CENTER 127.45 290.3	UNICOM 122.8 (CTAF) 0
--------------------------	--	---------------------------------



ELEV 1697	TDZE 1689
------------------	------------------

