

DUNKIRK, NEW YORK

AL-880 (FAA)

23222

APP CRS 329°	Rwy Idg TDZE Apt Elev	4000 692 692
------------------------	-----------------------------	---

RNAV (GPS) RWY 33

CHAUTAUQUA COUNTY/DUNKIRK (DKK)

RNP APCH.



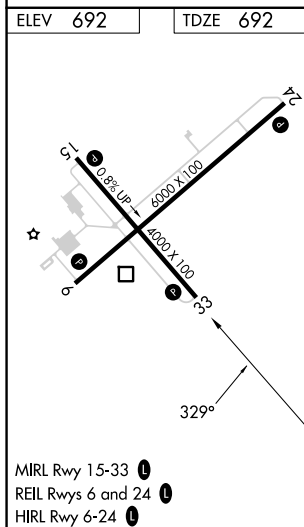
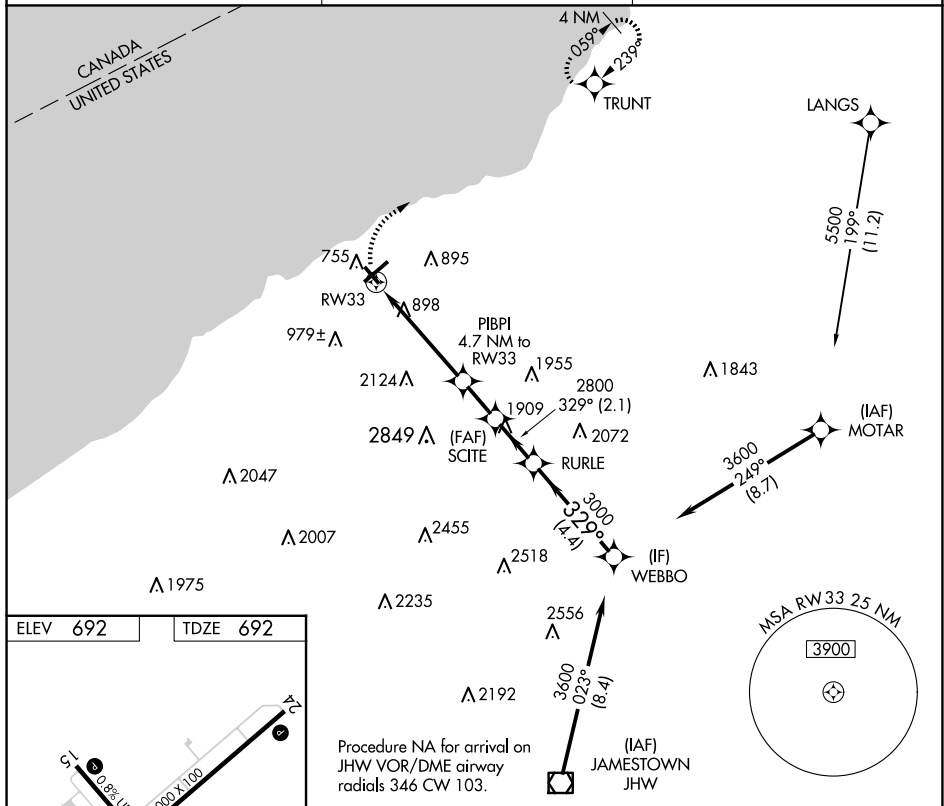
Circling Cat D NA southeast of Rwy 6 and southwest of Rwy 33.
Rwy 33 helicopter visibility reduction below 1 SM NA.
Straight-In Rwy 33 NA at night, Circling Rwy 6, 24, 33 NA at night.

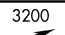
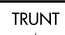


MISSED APPROACH: Climbing right turn to 3200 direct TRUNT and hold.

 -22°C

ASOS
119.275

BUFFALO APP CON
126.5 317.6

UNICOM
123.075 (CTAF) **L**

 		Visual Segment - Obstacles.				WEBBO	
							
CATEGORY	A		B		C		D
RNAV MDA	1860-1¼ 1168 (1200-1¼)		1860-1½ 1168 (1200-1½)		1860-3		1168 (1200-3)
 CIRCLING	1860-1¼ 1168 (1200-1¼)		1860-1½ 1168 (1200-1½)		1860-3 1168 (1200-3)		2140-3 1448 (1500-3)

DUNKIRK, NEW YORK
Orig-C 10OCT19

CHAUTAUQUA COUNTY/DUNKIRK (DKK)
RNAV (GPS) RWY 33

42°30'N-79°16'W

NE-2, 10 JUL 2025 to 07 AUG 2025

NE-2, 10 JUL 2025 to 07 AUG 2025