

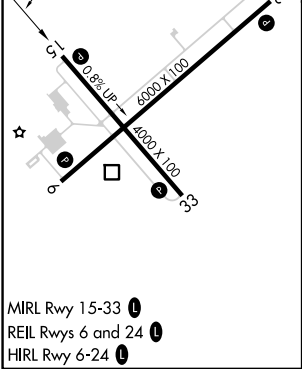
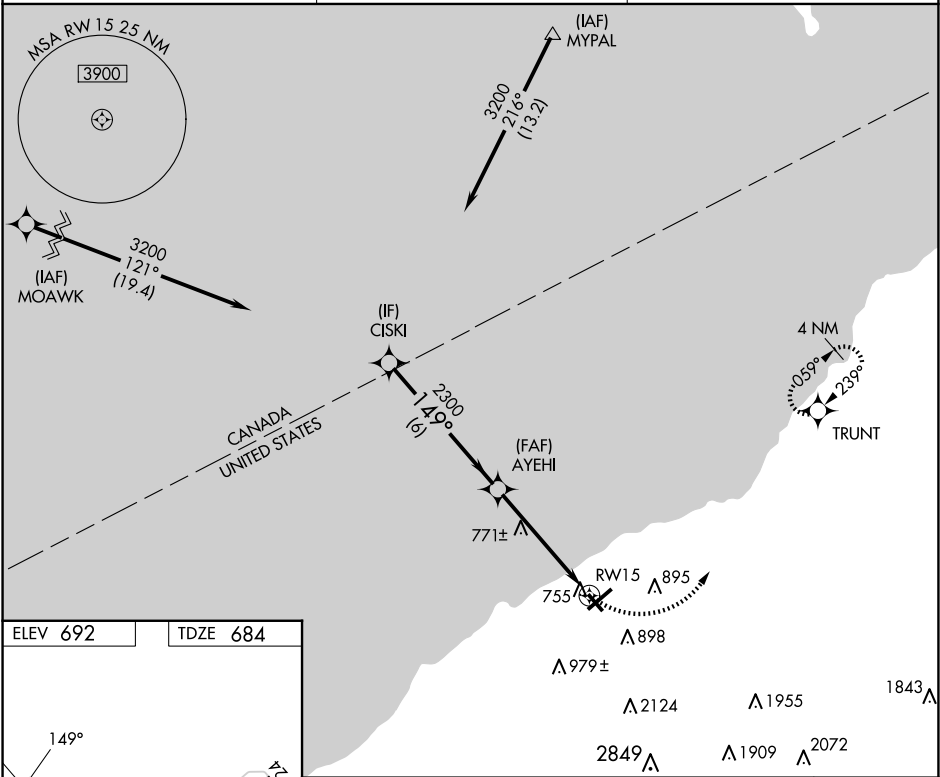
APP CRS	Rwy Idg	4000
149°	TDZE	684
	Apt Elev	692

RNAV (GPS) RWY 15

CHAUTAUQUA COUNTY/DUNKIRK (DKK)

RNP APCH.	<div><div><div>⚠</div><div>⚠</div><div>❄</div></div><div><div>Circling to Rwy 6, 24, 33 NA at night.</div><div>Circling Cat D NA southeast of Rwy 6 and southwest of Rwy 33.</div><div>Rwy 15 helicopter visibility reduction below <math>\frac{3}{4}</math> SM NA.</div></div></div>	MISSED APPROACH: Climbing left turn to 3200 direct TRUNT and hold, continue climb-in-hold to 3200.
-----------	---	--

ASOS 119.275	BUFFALO APP CON 126.5 317.6	UNICOM 123.075 (CTAF) 0
-----------------	--------------------------------	----------------------------



MIRL Rwy 15-33 0  
REIL Rwy 6 and 24 0  
HIRL Rwy 6-24 0

Visual Segment - Obstacles.				3200	TRUNT
CISKI				3200	
AYEHI				2300	
1.4 NM to RW15					
RW15					
6 NM				3.6 NM	1.4 NM
CATEGORY	A	B	C	D	
LNAV MDA	1140-1	456 (500-1)	1140-1 $\frac{3}{8}$	456 (500-1 $\frac{3}{8}$ )	
CIRCLING	1200-1 508 (600-1)	1320-1 628 (700-1)	1640-2 $\frac{3}{4}$ 948 (1000-2 $\frac{3}{4}$ )	2140-3 1448 (1500-3)	