

SC-2, 10 JUL 2025 to 07 AUG 2025



PLAINVIEW, TEXAS

AL-876 (FAA)

24193

VOR/DME PVW 112.9 Chan 76	APP CRS 024°	Rwy Idg 5997 TDZE 3374 Apt Elev 3374
---	------------------------	---

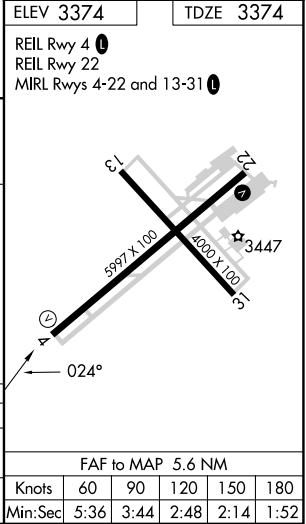
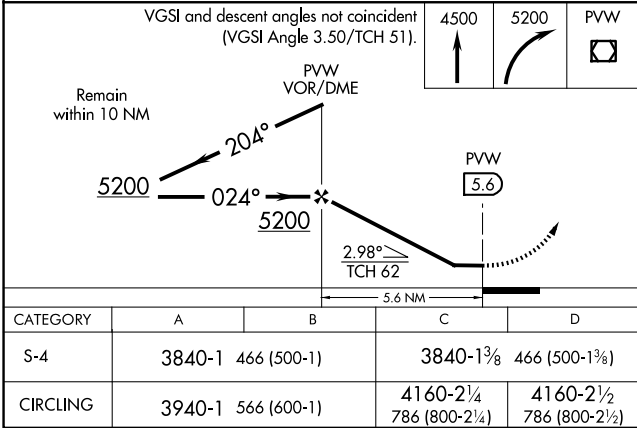
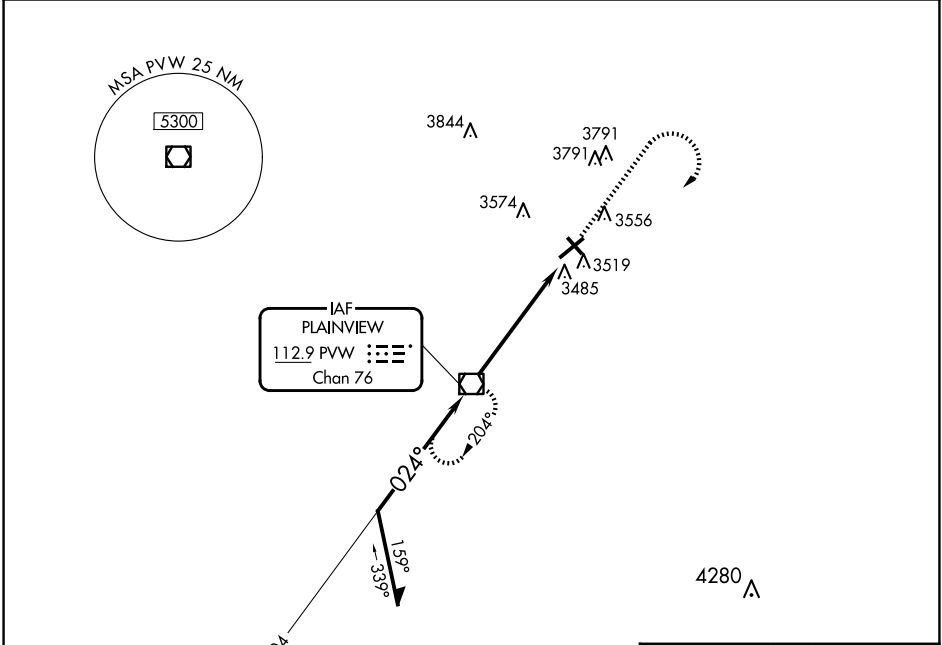
VOR RWY 4
HALE COUNTY (PVW)



When local altimeter setting not received, use Lubbock altimeter setting and increase all MDA 100 feet, increase S-4 visibility Cat C/D to 1½ SM, Circling Cat C visibility to 2¾ SM, and Circling Cat D visibility to 3 SM. Helicopter visibility reduction below ¾ mile NA.

MISSED APPROACH: Climb to 4500, then climbing right turn to 5200 direct PVW VOR/DME and hold.

AWOS-3 119.675	LUBBOCK APP CON 119.2 351.8	CLNC DEL 118.4	UNICOM 123.0 (CTAF) 0
--------------------------	---------------------------------------	--------------------------	--



PLAINVIEW, TEXAS
Amdt 9D 20MAY21

34°10'N-101°43'W

HALE COUNTY (PVW)
VOR RWY 4

SC-2, 10 JUL 2025 to 07 AUG 2025