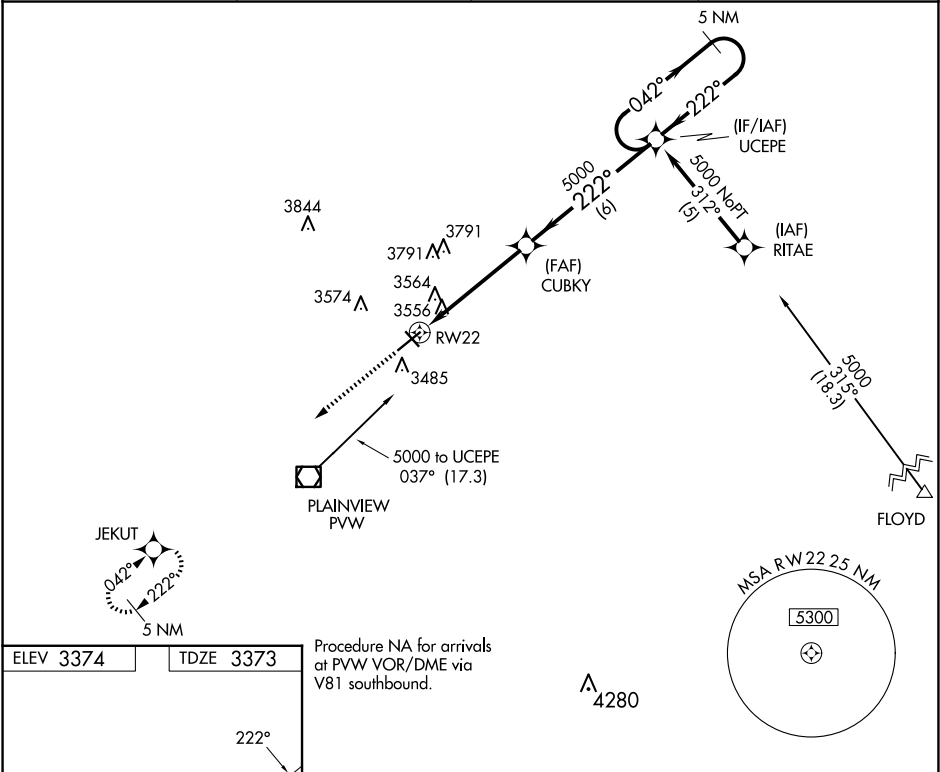


APP CRS	Rwy Idg	5997
222°	TDZE	3373
	Apt Elev	3374

RNAV (GPS) RWY 22
HALE COUNTY (PVW)

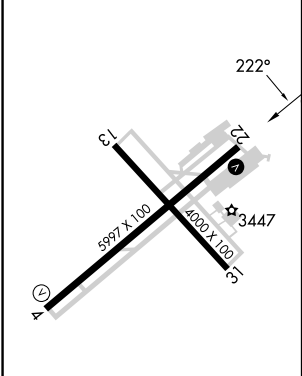
<p>⚠ DME/DME RNP-0.3 NA. When local altimeter setting not received, use Lubbock altimeter setting and increase all MDAs 100 feet and increase Circling Cat C/D visibility ½ SM. Visibility reduction by helicopters NA.</p>	<p>MISSED APPROACH: Climb to 5100 direct JEKUT and hold.</p>
--	--

AWOS-3 119.675	LUBBOCK APP CON 119.2 351.8	CLNC DEL 118.4	UNICOM 123.0 (CTAF) 0
-------------------	--------------------------------	-------------------	---------------------------------



ELEV 3374	TDZE 3373
-----------	-----------

Procedure NA for arrivals at PVW VOR/DME via V81 southbound.



5100	JEKUT	VGSI and descent angles not coincident (VGSI angle 3.50/TCH 54).			
		CUBKY	UCEPE	5 NM Holding Pattern	
RW22		5000	5000	042°	5000
		3.04° TCH 45		222°	
		4.9 NM	6 NM		
CATEGORY	A	B	C	D	
LNAV MDA	3820-1	447 (500-1)	3820-1¼ 447 (500-1¼)	3820-1½ 447 (500-1½)	
CIRCLING	3940-1	566 (600-1)	4160-2¼ 786 (800-2¼)	4160-2½ 786 (800-2½)	

REIL Rwy 4 **0**
REIL Rwy 22
MIRL Rwy 4-22 and 13-31 **0**

SC-2, 10 JUL 2025 to 07 AUG 2025

SC-2, 10 JUL 2025 to 07 AUG 2025